

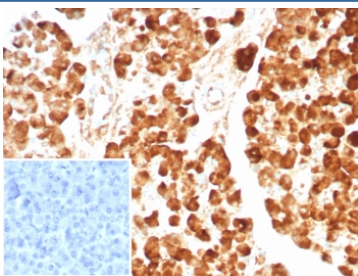
CPA1 Antibody / Carboxypeptidase A1 [clone CPA1/8624R] (V5223)

Catalog No.	Formulation	Size
V5223-100UG	0.2 mg/ml in 1X PBS with 0.1 mg/ml BSA (US sourced), 0.05% sodium azide	100 ug
V5223-20UG	0.2 mg/ml in 1X PBS with 0.1 mg/ml BSA (US sourced), 0.05% sodium azide	20 ug
V5223SAF-100UG	1 mg/ml in 1X PBS; BSA free, sodium azide free	100 ug

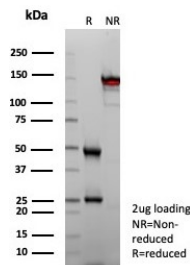
Recombinant **RABBIT MONOCLONAL**

[Bulk quote request](#)

Availability	1-3 business days
Species Reactivity	Human
Format	Purified
Host	Rabbit
Clonality	Recombinant Rabbit Monoclonal
Isotype	Rabbit IgG, kappa
Clone Name	CPA1/8624R
Purity	Protein A/G affinity
UniProt	P15085
Localization	Secreted
Applications	Immunohistochemistry (FFPE) : 1-2ug/ml for 30 min at RT
Limitations	This CPA1 antibody is available for research use only.



IHC staining of FFPE human pancreas tissue with CPA1 antibody (clone CPA1/8624R). Inset: PBS used in place of primary Ab (secondary Ab negative control). HIER: boil tissue sections in pH 9 10mM Tris with 1mM EDTA for 20 min and allow to cool before testing.



SDS-PAGE analysis of purified, BSA-free CPA1 antibody (clone CPA1/8624R) as confirmation of integrity and purity.

Description

Human pancreatic procarboxypeptidase A exists as three different active forms, two of which are designated carboxypeptidase A1 (CPA1) and carboxypeptidase A2 (CPA2). CPA1, also known as CPA, is a 419 amino acid secreted monomeric protein that is highly expressed in pancreatic tissue. Functioning as a pancreatic exopeptidase, CPA1 uses zinc as a cofactor to catalyze the release of C-terminal amino acids from a variety of proteins, thereby playing a key role in protein digestion and degradation. Via its catalytic activity, CPA1 is also thought to be involved in zymogen (proenzyme) inhibition, probably functioning to block enzyme activation pathways. Abnormal levels of CPA1 are associated with pancreatic cancer, suggesting a possible role in either tumor progression or tumor suppression events.

For additional tissue-specific detection and characterization of CPA1 expression as a pancreatic acinar cell marker, see our [Carboxypeptidase A1 antibody clone CPA1/8163R](#) featuring validated IHC and western blot data.

Application Notes

Optimal dilution of the CPA1 antibody should be determined by the researcher.

Immunogen

Recombinant full-length human CPA1 protein was used as the immunogen for the CPA1 antibody.

Storage

Aliquot the CPA1 antibody and store frozen at -20°C or colder. Avoid repeated freeze-thaw cycles.