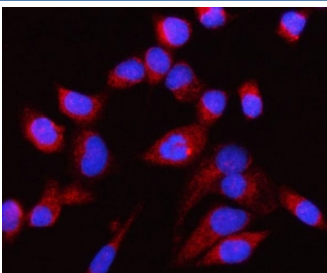


CP110 Antibody / Centriolar coiled-coil protein of 110 kDa (RQ4141)

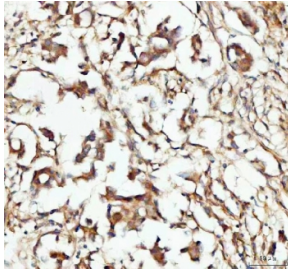
Catalog No.	Formulation	Size
RQ4141	0.5mg/ml if reconstituted with 0.2ml sterile DI water	100 ug

Bulk quote request

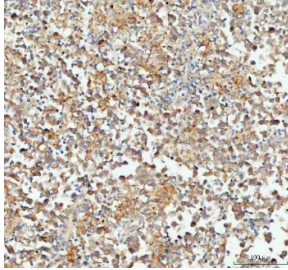
Availability	1-3 business days
Species Reactivity	Human, Mouse, Rat
Format	Antigen affinity purified
Host	Rabbit
Clonality	Polyclonal (rabbit origin)
Isotype	Rabbit IgG
Purity	Antigen affinity purified
Buffer	Lyophilized from 1X PBS with 2% Trehalose
UniProt	O43303
Localization	Cytoplasmic
Applications	Western Blot : 0.5-1ug/ml Immunohistochemistry (FFPE) : 2-5ug/ml Immunofluorescence : 5ug/ml Direct ELISA : 0.1-0.5ug/ml
Limitations	This CP110 antibody is available for research use only.



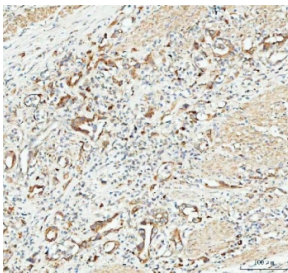
Immunofluorescent staining of FFPE human HeLa cells with CP110 antibody (red) and DAPI nuclear stain (blue). HIER: steam section in pH6 citrate buffer for 20 min.



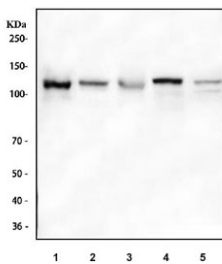
IHC testing of FFPE human breast cancer tissue with CP110 antibody. Required HIER: steam section in pH8 EDTA buffer for 20 min and allow to cool prior to testing.



IHC testing of FFPE human testicular germ cell tumor tissue with CP110 antibody. Required HIER: steam section in pH8 EDTA buffer for 20 min and allow to cool prior to testing.



IHC testing of FFPE human colorectal adenocarcinoma tissue with CP110 antibody. Required HIER: steam section in pH8 EDTA buffer for 20 min and allow to cool prior to testing.



Western blot testing of 1) human MOLT4, 2) human HeLa, 3) human PANC-1, 4) rat PC-12 and 5) mouse RAW264.7 cell lysate with CP110 antibody. Expected molecular weight ~110 kDa.

Description

Centriolar coiled-coil protein of 110 kDa also known as centrosomal protein of 110 kDa or CP110 is a protein that in humans is encoded by the CCP110 gene. This gene is mapped to chromosome 16p12.3. It is a cell cycle-dependent CDK substrate and regulates centrosome duplication. CP110 suppresses a cilia assembly program. CCP110 functions in a protein complex that participates in the transition of centrioles from basal body function to centrosomal function.

Application Notes

Optimal dilution of the CP110 antibody should be determined by the researcher.

Immunogen

A recombinant human partial protein corresponding to amino acids E51-H284 was used as the immunogen for the CP110 antibody.

Storage

After reconstitution, the CP110 antibody can be stored for up to one month at 4°C. For long-term, aliquot and store at -20°C. Avoid repeated freezing and thawing.

