

## CP Antibody / Ceruloplasmin (F50324)

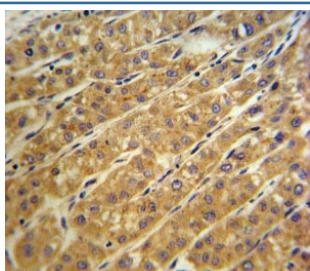
Catalog No.	Formulation	Size
F50324-0.4ML	In 1X PBS, pH 7.4, with 0.09% sodium azide	0.4 ml
F50324-0.08ML	In 1X PBS, pH 7.4, with 0.09% sodium azide	0.08 ml

[Bulk quote request](#)

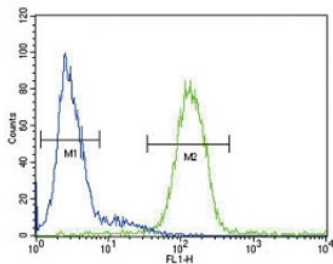
<b>Availability</b>	1-3 business days
<b>Species Reactivity</b>	Human, Mouse
<b>Format</b>	Purified
<b>Clonality</b>	Polyclonal (rabbit origin)
<b>Isotype</b>	Rabbit Ig
<b>Purity</b>	Purified
<b>UniProt</b>	P00450
<b>Localization</b>	Cytoplasmic
<b>Applications</b>	Western Blot : 1:1000 IHC (Paraffin) : 1:10-1:50 Flow Cytometry : 1:10-1:50
<b>Limitations</b>	This CP antibody is available for research use only.

250  
130  
95  
72  
55

Western blot analysis of CP antibody and mouse lung tissue lysate. Predicted molecular weight ~130 kDa.



CP antibody IHC analysis in formalin fixed and paraffin embedded human hepatocarcinoma.



CP antibody flow cytometric analysis of HepG2 cells (green) compared to a [negative control](#) (blue). FITC-conjugated goat-anti-rabbit secondary Ab was used for the analysis.

## Description

Ceruloplasmin is a metalloprotein that binds most of the copper in plasma and is involved in the peroxidation of Fe(II) transferrin to Fe(III) transferrin. Mutations in this protein cause aceruloplasminemia, which results in iron accumulation and tissue damage, and is associated with diabetes and neurologic abnormalities.

## Application Notes

Titration of the CP antibody may be required due to differences in protocols and secondary/substrate sensitivity.

## Immunogen

A portion of amino acids 547-577 from the human protein was used as the immunogen for this CP antibody.

## Storage

Aliquot the CP antibody and store frozen at -20oC or colder. Avoid repeated freeze-thaw cycles.