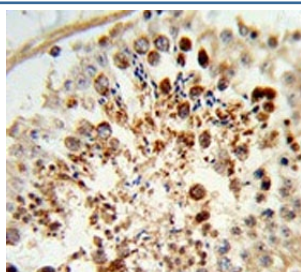


COX6A1 Antibody (F55023)

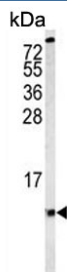
Catalog No.	Formulation	Size
F55023-0.4ML	In 1X PBS, pH 7.4, with 0.09% sodium azide	0.4 ml
F55023-0.08ML	In 1X PBS, pH 7.4, with 0.09% sodium azide	0.08 ml

[Bulk quote request](#)

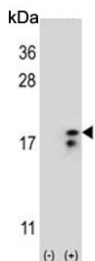
Availability	1-3 business days
Species Reactivity	Human
Format	Purified
Host	Rabbit
Clonality	Polyclonal (rabbit origin)
Isotype	Rabbit Ig
Purity	Antigen affinity purified
UniProt	P12074
Localization	Cytoplasmic
Applications	Western Blot : 1:500-1:1000 Flow Cytometry : 1:10-1:50 (1x10e6 cells) Immunohistochemistry (FFPE) : 1:50-1:100
Limitations	This COX6A1 antibody is available for research use only.



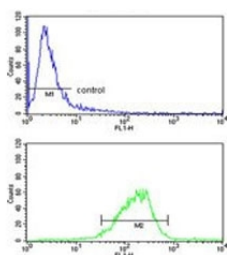
IHC testing of FFPE human testis tissue with COX6A1 antibody. HIER: steam section in pH6 citrate buffer for 20 min and allow to cool prior to staining.



Western blot testing of human MDA-MB-435 cell lysate with COX6A1 antibody.
Predicted molecular weight ~12 kDa.



Western blot testing of 1) non-transfected and 2) transfected 293 cell lysate with COX6A1 antibody.



Flow cytometry testing of fixed and permeabilized human HT-29 cells with COX6A1 antibody; Blue=isotype control, Green= COX6A1 antibody.

Description

Component of the cytochrome c oxidase, the last enzyme in the mitochondrial electron transport chain which drives oxidative phosphorylation. [UniProt]

Application Notes

The stated application concentrations are suggested starting points. Titration of the COX6A1 antibody may be required due to differences in protocols and secondary/substrate sensitivity.

Immunogen

A portion of amino acids 50-78 from the human protein was used as the immunogen for the COX6A1 antibody.

Storage

Aliquot the COX6A1 antibody and store frozen at -20oC or colder. Avoid repeated freeze-thaw cycles.