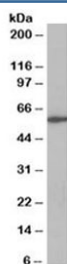


CORO1A Antibody (R34624)

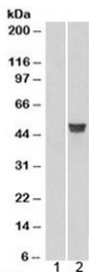
Catalog No.	Formulation	Size
R34624-100UG	0.5 mg/ml in 1X TBS, pH7.3, with 0.5% BSA (US sourced) and 0.02% sodium azide	100 ug

[Bulk quote request](#)

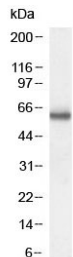
Availability	1-3 business days
Species Reactivity	Human
Predicted Reactivity	Mouse, Rat, Dog, Cow
Format	Antigen affinity purified
Host	Goat
Clonality	Polyclonal (goat origin)
Isotype	Goat Ig
Purity	Antigen affinity
Gene ID	11151
Localization	Cytoplasmic
Applications	Western Blot : 0.3-1ug/ml IHC (FFPE) : 3-6ug/ml ELISA (peptide) LOD : 1:16000
Limitations	This CORO1A antibody is available for research use only.



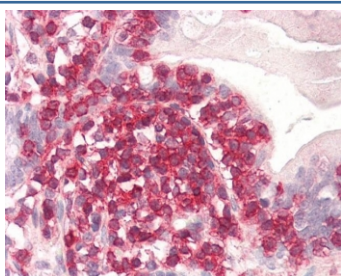
Western blot testing of Jurkat lysate with CORO1A antibody at 0.3ug/ml. Predicted molecular weight: ~51 kDa, observed here at ~60 kDa.



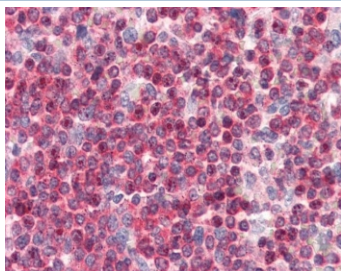
Western blot of HEK293 lysate overexpressing CORO1A probed with CORO1A antibody (mock transfection in lane 1). Predicted molecular weight: ~51 kDa.



Western blot testing of human lymphoblast cell lysate with CORO1A antibody at 0.3ug/ml. Predicted molecular weight: ~51 kDa, observed here at ~60 kDa.



IHC testing of FFPE human small intestine tissue with CORO1A antibody at 3.75ug/ml. HIER: steamed antigen retrieval with pH6 citrate buffer; AP-staining.



IHC testing of FFPE spleen tissue with CORO1A antibody at 3.75ug/ml. HIER: steamed antigen retrieval with pH6 citrate buffer; AP-staining.

Description

Additional name(s) for this target protein: Coronin 1, TACO

Application Notes

Optimal dilution of the CORO1A antibody should be determined by the researcher.

Immunogen

Amino acids KRLDRLEETVQAK were used as the immunogen for this CORO1A antibody.

Storage

Aliquot and store the CORO1A antibody at -20oC.

