

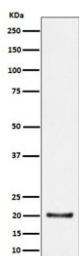
## COPS8 Antibody / COP9 signalosome complex subunit 8 / CSN8 [clone 28C83] (RQ8600)

Catalog No.	Formulation	Size
RQ8600	Antibody in PBS with 0.02% sodium azide, 50% glycerol and 0.4-0.5mg/ml BSA	100 ug

Recombinant **RABBIT MONOCLONAL**

[Bulk quote request](#)

Availability	1-3 days
Species Reactivity	Human
Format	Purified
Host	Rabbit
Clonality	Recombinant Rabbit Monoclonal
Isotype	Rabbit IgG
Clone Name	28C83
Purity	Affinity chromatography
UniProt	Q99627
Applications	Western Blot : 1:500-1:2000
Limitations	This COPS8 antibody is available for research use only.



Western blot testing of human HepG2 cell lysate with COPS8 antibody. Predicted molecular weight ~23 kDa and ~18 kDa (two isoforms).

### Description

Component of the COP9 signalosome complex (CSN), a complex involved in various cellular and developmental processes. The CSN complex is an essential regulator of the ubiquitin (Ubl) conjugation pathway by mediating the deneddylation of the cullin subunits of SCF-type E3 ligase complexes, leading to decrease the Ubl ligase activity of SCF-type complexes such as SCF, CSA or DDB2. [UniProt]

## Application Notes

Optimal dilution of the COPS8 antibody should be determined by the researcher.

## Immunogen

A synthetic peptide from human COP9 signalosome complex subunit 8 protein was used as the immunogen for the COPS8 antibody.

## Storage

Store the COPS8 antibody at -20oC.