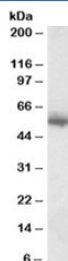


Copine 1 Antibody (R33155)

Catalog No.	Formulation	Size
R33155-100UG	0.5 mg/ml in 1X TBS, pH7.3, with 0.5% BSA (US sourced) and 0.02% sodium azide	100 ug

[Bulk quote request](#)

Availability	1-3 business days
Species Reactivity	Human
Predicted Reactivity	Cow, Dog
Format	Antigen affinity purified
Host	Goat
Clonality	Polyclonal (goat origin)
Isotype	Goat Ig
Purity	Antigen affinity
Gene ID	8904
Applications	Western Blot : 0.1-0.3ug/ml ELISA (peptide) LOD : 1:16000
Limitations	This Copine 1 antibody is available for research use only.



Western blot testing of human skin lysate with Copine 1 antibody at 0.1ug/ml. Predicted molecular weight: ~59kDa.

Description

Additional name(s) for this target protein: CPNE1

Application Notes

Optimal dilution of the Copine 1 antibody should be determined by the researcher.

Immunogen

Amino acids APLKPLPPSAKDPA were used as the immunogen for this Copine 1 antibody.

Storage

Aliquot and store the Copine 1 antibody at -20oC.