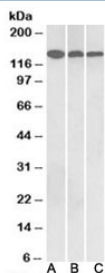


Contactin 1 Antibody / GP135 (R33893)

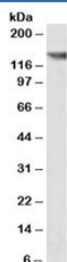
| Catalog No. | Formulation | Size |
|--------------|---|--------|
| R33893-100UG | 0.5 mg/ml in 1X TBS, pH7.3, with 0.5% BSA (US sourced) and 0.02% sodium azide | 100 ug |

[Bulk quote request](#)

| | |
|---------------------------|---|
| Availability | 1-3 business days |
| Species Reactivity | Human, Mouse, Rat, Pig |
| Format | Antigen affinity purified |
| Host | Goat |
| Clonality | Polyclonal (goat origin) |
| Isotype | Goat Ig |
| Purity | Antigen affinity |
| Gene ID | 1272 |
| Applications | Western Blot : 0.3-1ug/ml ELISA (peptide) LOD : 1:32000 |
| Limitations | This Contactin 1 antibody is available for research use only. |



Western blot testing of human cerebellum [A], mouse brain [B] and rat brain [C] lysates with Contactin 1 antibody at 0.3ug/ml. Predicted molecular weight: ~113/135-150kDa (unmodified/glycosylated).



Western blot of pig brain lysate with Contactin 1 antibody at 0.3ug/ml. Predicted molecular weight: ~113/135-150kDa (unmodified/glycosylated).

Description

Additional name(s) for this target protein: CNTN1; neural cell surface protein F3

Application Notes

Optimal dilution of the Contactin 1 antibody should be determined by the researcher.

Immunogen

Amino acids ENIRGKDKHQAR (internal region) were used as the immunogen for this Contactin 1 antibody.

Storage

Aliquot and store the Contactin 1 antibody at -20oC.