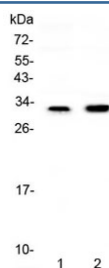


Connexin 32 Antibody / GJB1 (RQ4180)

Catalog No.	Formulation	Size
RQ4180	0.5mg/ml if reconstituted with 0.2ml sterile DI water	100 ug

Bulk quote request

Availability	1-3 business days
Species Reactivity	Mouse, Rat
Predicted Reactivity	Human
Format	Antigen affinity purified
Clonality	Polyclonal (rabbit origin)
Isotype	Rabbit IgG
Purity	Antigen affinity purified
Buffer	Lyophilized from 1X PBS with 2% Trehalose and 0.025% sodium azide
UniProt	P08034
Localization	Cell surface, cytoplasm
Applications	Western Blot : 0.5-1ug/ml
Limitations	This Connexin 32 antibody is available for research use only.



Western blot testing of 1) rat kidney and 2) mouse kidney lysate with Connexin 32 antibody at 0.5ug/ml. Predicted molecular weight ~32 kDa.

Description

Gap junction beta-1 protein (GJB1), also known as Connexin 32 (Cx32) is a transmembrane protein that in humans is encoded by the GJB1 gene. This gene encodes a member of the gap junction protein family. The gap junction proteins are membrane-spanning proteins that assemble to form gap junction channels that facilitate the transfer of ions and small molecules between cells. According to sequence similarities at the nucleotide and amino acid levels, the gap junction proteins are divided into two categories, alpha and beta. Mutations in this gene cause X-linked Charcot-Marie-Tooth

disease, an inherited peripheral neuropathy. Alternatively spliced transcript variants encoding the same protein have been found for this gene.

Application Notes

Optimal dilution of the Connexin 32 antibody should be determined by the researcher.

Immunogen

Amino acids AMHVAHQHIEKKMLRLEGHGDPLHLEEVKRHKVH were used as the immunogen for the Connexin 32 antibody.

Storage

After reconstitution, the Connexin 32 antibody can be stored for up to one month at 4°C. For long-term, aliquot and store at -20°C. Avoid repeated freezing and thawing.