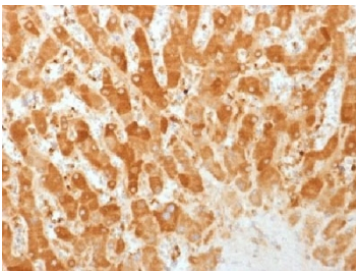


Connexin 32 Antibody / GJB1 [clone GJB1/1753] (V3304)

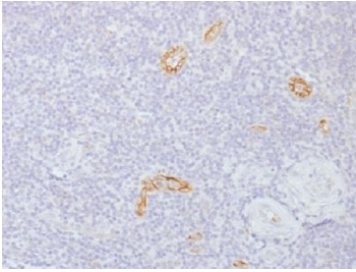
Catalog No.	Formulation	Size
V3304-100UG	0.2 mg/ml in 1X PBS with 0.1 mg/ml BSA (US sourced) and 0.05% sodium azide	100 ug
V3304-20UG	0.2 mg/ml in 1X PBS with 0.1 mg/ml BSA (US sourced) and 0.05% sodium azide	20 ug
V3304SAF-100UG	1 mg/ml in 1X PBS; BSA free, sodium azide free	100 ug

Bulk quote request

Availability	1-3 business days
Species Reactivity	Human, Mouse, Rat
Format	Purified
Host	Mouse
Clonality	Monoclonal (mouse origin)
Isotype	Mouse IgG
Clone Name	GJB1/1753
Purity	Protein G affinity chromatography
UniProt	P08034
Localization	Cell surface, cytoplasmic
Applications	Immunohistochemistry (FFPE) : 0.1-0.2ug/ml for 30 min at RT
Limitations	This Connexin 32 antibody is available for research use only.



IHC testing of FFPE human liver with Connexin 32 antibody (clone GJB1/1753).
Required HIER: boil tissue sections in 10mM citrate buffer, pH 6, for 10-20 min.



IHC testing of FFPE human tonsil with Connexin 32 antibody (clone GJB1/1753).
Required HIER: boil tissue sections in 10mM citrate buffer, pH 6, for 10-20 min.

Description

This Ab recognizes a protein of 27-32kDa, identified as Connexin 32, also called Gap junction protein beta 1. The connexin family of proteins forms hexameric complexes called connexons that facilitate movement of low molecular weight proteins between cells via gap junctions. Connexin proteins share a common topology of four transmembrane α -helical domains, two extracellular loops, a cytoplasmic loop and cytoplasmic N- and C-termini. Many of the key functional differences arise from specific amino-acid substitutions in the most highly conserved domains, the transmembrane and extracellular regions. Each of the approximately 20-connexin isoforms produces channels with distinct permeability and electrical and chemical sensitivities; therefore, one connexin usually cannot fully substitute for another.

Application Notes

Optimal dilution of the Connexin 32 antibody should be determined by the researcher.

Immunogen

A recombinant human protein was used as the immunogen for the Connexin 32 antibody.

Storage

Store the Connexin 32 antibody at 2-8°C (with azide) or aliquot and store at -20°C or colder (without azide).