


Connective Tissue Growth Factor Antibody (F50760)

Catalog No.	Formulation	Size
F50760-0.4ML	In 1X PBS, pH 7.4, with 0.09% sodium azide	0.4 ml
F50760-0.08ML	In 1X PBS, pH 7.4, with 0.09% sodium azide	0.08 ml

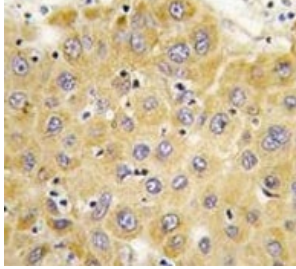
[Bulk quote request](#)

Availability	1-3 business days
Species Reactivity	Human
Predicted Reactivity	Mouse, Rat, Bovine, Pig
Format	Purified
Host	Rabbit
Clonality	Polyclonal (rabbit origin)
Isotype	Rabbit Ig
Purity	Purified
UniProt	P29279
Localization	Cytoplasmic, secreted
Applications	Western Blot : 1:1000 IHC (Paraffin) : 1:10-1:50
Limitations	This Connective Tissue Growth Factor antibody is available for research use only.



72
55
36
28
17

Western blot analysis of Connective Tissue Growth Factor antibody and NCI-H460 lysate. Predicted molecular weight ~38kDa.



IHC analysis of FFPE human hepatocarcinoma tissue stained with Connective Tissue Growth Factor antibody

Description

CTGF, a member of the CCN family of secreted matricellular proteins, regulates fibrosis, angiogenesis, cell proliferation, apoptosis, tumor growth, and metastasis.

Application Notes

Titration of the Connective Tissue Growth Factor antibody may be required due to differences in protocols and secondary/substrate sensitivity.

Immunogen

A portion of amino acids 315-349 from the human protein was used as the immunogen for this Connective Tissue Growth Factor antibody.

Storage

Aliquot the Connective Tissue Growth Factor antibody and store frozen at -20°C or colder. Avoid repeated freeze-thaw cycles.