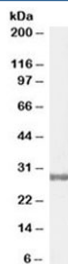


## COMT Antibody (R35218)

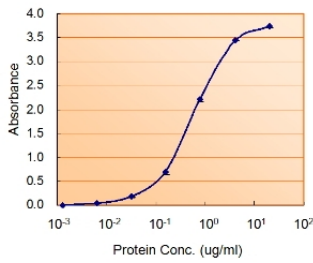
Catalog No.	Formulation	Size
R35218-100UG	0.5 mg/ml in 1X TBS, pH7.3, with 0.5% BSA (US sourced) and 0.02% sodium azide	100 ug

[Bulk quote request](#)

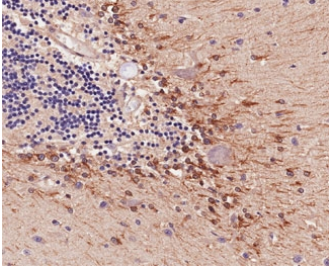
<b>Availability</b>	1-3 business days
<b>Species Reactivity</b>	Human
<b>Format</b>	Antigen affinity purified
<b>Host</b>	Goat
<b>Clonality</b>	Polyclonal (goat origin)
<b>Isotype</b>	Goat Ig
<b>Purity</b>	Antigen affinity
<b>Gene ID</b>	1312
<b>Localization</b>	Cytoplasmic, membranous
<b>Applications</b>	Western Blot : 0.3-1ug/ml IHC (FFPE) : 2-4ug/ml Enzyme ImmunoAssay : binds recombinant protein (use at 0.5-2ug/ml) ELISA (peptide) LOD : 1:64000
<b>Limitations</b>	This COMT antibody is available for research use only.



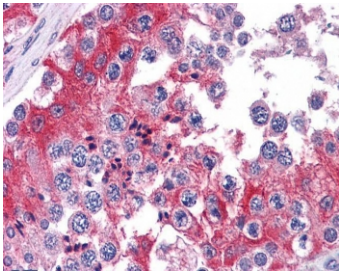
Western blot testing of human testis lysate with COMT antibody at 0.3ug/ml. Predicted molecular weight: ~30/25 kDa (isoforms 1/2).



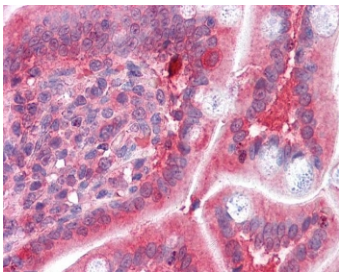
Sandwich ELISA using the COMT antibody at 0.5ug/ml as the detect.



IHC testing of FFPE human cerebellum with COMT antibody at 4ug/ml. HIER: steamed with pH9 Tris/EDTA, HRP-staining.



IHC testing of FFPE human testis tissue with COMT antibody at 3.75ug/ml. Required HIER: steamed antigen retrieval with pH6 citrate buffer; AP-staining.



IHC testing of FFPE human small intestine tissue with COMT antibody at 3.75ug/ml. Required HIER: steamed antigen retrieval with pH6 citrate buffer; AP-staining.

## Description

Additional name(s) for this target protein: Catechol-O-methyltransferase

## Application Notes

Optimal dilution of the COMT antibody should be determined by the researcher.

## Immunogen

Amino acids QDIIPQLKKKYDVD were used as the immunogen for this COMT antibody.

## Storage

Aliquot and store the COMT antibody at -20oC.

