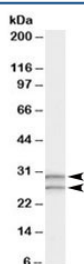


COMT Antibody (R34075)

Catalog No.	Formulation	Size
R34075-100UG	0.5 mg/ml in 1X TBS, pH7.3, with 0.5% BSA (US sourced) and 0.02% sodium azide	100 ug

[Bulk quote request](#)

Availability	1-3 business days
Species Reactivity	Human
Predicted Reactivity	Dog, Mouse, Rat
Format	Antigen affinity purified
Clonality	Polyclonal (goat origin)
Isotype	Goat Ig
Purity	Antigen affinity
Gene ID	1312
Applications	Western Blot : 0.3-1ug/ml ELISA (peptide) LOD : 1:8000
Limitations	This COMT antibody is available for research use only.



Western blot testing of human testis lysate with COMT antibody at 0.3ug/ml. Predicted molecular weight: ~30/25kDa (isoforms 1/2).

Description

Additional name(s) for this target protein: Catechol-O-methyltransferase

Application Notes

Optimal dilution of the COMT antibody should be determined by the researcher.

Immunogen

Amino acids GDTKEQRILNHVLQC were used as the immunogen for this COMT antibody.

Storage

Aliquot and store the COMT antibody at -20oC.