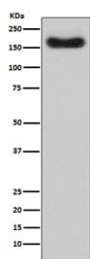


Complement Factor H Antibody / CFH [clone ACCI-3] (RQ5244)

Catalog No.	Formulation	Size
RQ5244	Antibody in PBS with 0.02% sodium azide, 50% glycerol and 0.4-0.5mg/ml BSA	100 ul

[Bulk quote request](#)

Availability	1-2 weeks
Species Reactivity	Human
Format	Purified
Clonality	Rabbit Monoclonal
Isotype	Rabbit IgG
Clone Name	ACCI-3
Purity	Affinity purified
UniProt	P08603
Applications	Western Blot : 1:500-1:2000
Limitations	This Complement Factor H antibody is available for research use only.



Western blot testing of human plasma lysate with Complement Factor H antibody. Predicted molecular weight ~139 kDa but may be observed at a higher molecular weight due to glycosylation.

Description

Complement Factor H functions as a cofactor in the inactivation of C3b by factor I and also increases the rate of dissociation of the C3bBb complex (C3 convertase) and the (C3b) NBB complex (C5 convertase) in the alternative complement pathway.

Application Notes

Optimal dilution of the Complement Factor H antibody should be determined by the researcher.

Immunogen

A synthetic peptide specific to human Complement Factor H / CFH was used as the immunogen for the Complement Factor H antibody.

Storage

Store the Complement Factor H antibody at -20oC.