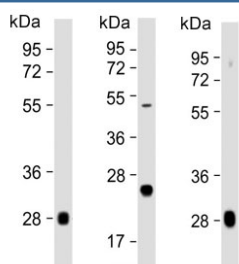


Complement Factor D Antibody / CFD (F54234)

Catalog No.	Formulation	Size
F54234-0.4ML	In 1X PBS, pH 7.4, with 0.09% sodium azide	0.4 ml
F54234-0.08ML	In 1X PBS, pH 7.4, with 0.09% sodium azide	0.08 ml

[Bulk quote request](#)

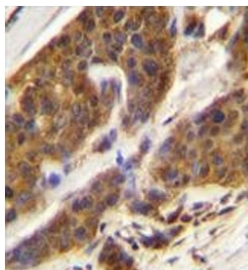
Availability	1-3 business days
Species Reactivity	Human
Format	Purified
Clonality	Polyclonal (rabbit origin)
Isotype	Rabbit Ig
Purity	Antigen affinity purified
UniProt	P00746
Gene ID	1675
Applications	Western Blot : 1:1000-1:2000 Immunohistochemistry : 1:50-1:100
Limitations	This Complement Factor D antibody is available for research use only.



Western blot testing of multiple lots of human plasma lysate with Complement Factor D antibody. Predicted molecular weight: ~27 kDa.



Western blot testing of human A549 cell lysate with Complement Factor D antibody. Predicted molecular weight: ~27 kDa.



IHC testing of FFPE human bladder carcinoma with Complement Factor D antibody.
HIER: steam section in pH6 citrate buffer for 20 min and allow to cool prior to staining.

Description

The protein encoded by this gene is a member of the trypsin family of peptidases. The encoded protein is a component of the alternative complement pathway best known for its role in humoral suppression of infectious agents. This protein is also a serine protease that is secreted by adipocytes into the bloodstream. Finally, the encoded protein has a high level of expression in fat, suggesting a role for adipose tissue in immune system biology.

Application Notes

The stated application concentrations are suggested starting points. Titration of the Complement Factor D antibody may be required due to differences in protocols and secondary/substrate sensitivity.

Immunogen

A portion of amino acids 68-99 from the human protein were used as the immunogen for the Complement Factor D antibody.

Storage

Aliquot the Complement Factor D antibody and store frozen at -20oC or colder. Avoid repeated freeze-thaw cycles.