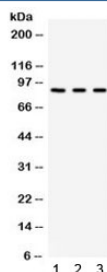


Complement Factor B Antibody / CFB (R32391)

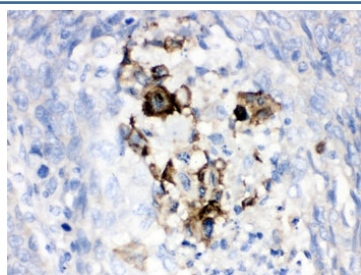
Catalog No.	Formulation	Size
R32391	0.5mg/ml if reconstituted with 0.2ml sterile DI water	100 ug

Bulk quote request

Availability	1-3 business days
Species Reactivity	Human
Format	Antigen affinity purified
Clonality	Polyclonal (rabbit origin)
Isotype	Rabbit IgG
Purity	Antigen affinity
Buffer	Lyophilized from 1X PBS with 2.5% BSA and 0.025% sodium azide
UniProt	P00751
Localization	Cytoplasmic
Applications	Western Blot : 0.1-0.5ug/ml IHC (FFPE) : 0.5-1ug/ml
Limitations	This Complement Factor B antibody is available for research use only.



Western blot testing of human 1) A549, 2) 293 and 3) HeLa cell lysate with Complement Factor B antibody. Expected/observed molecular weight ~86 kDa.



IHC testing of FFPE human lung cancer tissue with Complement Factor B antibody. HIER: Boil the paraffin sections in pH 6, 10mM citrate buffer for 20 minutes and allow to cool prior to testing.

Description

Complement factor B is a protein that in humans is encoded by the CFB gene. This gene encodes complement factor B, a component of the alternative pathway of complement activation. Factor B circulates in the blood as a single chain polypeptide. Upon activation of the alternative pathway, it is cleaved by complement factor D yielding the noncatalytic chain Ba and the catalytic subunit Bb. The active subunit Bb is a serine protease which associates with C3b to form the alternative pathway C3 convertase. Bb is involved in the proliferation of preactivated B lymphocytes, while Ba inhibits their proliferation. This gene localizes to the major histocompatibility complex (MHC) class III region on chromosome 6. This cluster includes several genes involved in regulation of the immune reaction. Polymorphisms in this gene are associated with a reduced risk of age-related macular degeneration. The polyadenylation site of this gene is 421 bp from the 5' end of the gene for complement component 2.

Application Notes

Optimal dilution of the Complement Factor B antibody should be determined by the researcher.

Immunogen

Amino acids E518-L764 from the human protein were used as the immunogen for the Complement Factor B antibody.

Storage

After reconstitution, the Complement Factor B antibody can be stored for up to one month at 4oC. For long-term, aliquot and store at -20oC. Avoid repeated freezing and thawing.