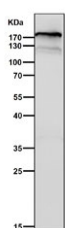


Complement C3 Antibody [clone AEIC-3] (RQ4855)

Catalog No.	Formulation	Size
RQ4855	Antibody in PBS with 0.02% sodium azide, 50% glycerol and 0.4-0.5mg/ml BSA	100 ug

[Bulk quote request](#)

Availability	1-3 business days
Species Reactivity	Human
Format	Purified
Clonality	Rabbit Monoclonal
Isotype	Rabbit IgG
Clone Name	AEIC-3
Purity	Affinity purified
UniProt	P01024
Applications	Western Blot : 1:500-1:2000
Limitations	This Complement C3 antibody is available for research use only.



Western blot testing of human MCF7 cell lysate with C3 antibody. Expected molecular weight: ~185 kDa (alpha + beta chain), ~110 kDa (alpha chain).

Description

Complement component C3 plays a central role in the activation of complement system. Its activation is required for both classical and alternative complement activation pathways. The encoded preproprotein is proteolytically processed to generate alpha and beta subunits that form the mature protein, which is then further processed to generate numerous peptide products. The C3a peptide, also known as the C3a anaphylatoxin, modulates inflammation and possesses antimicrobial activity. Mutations in this gene are associated with atypical hemolytic uremic syndrome and age-related macular degeneration in human patients. [RefSeq]

Application Notes

Optimal dilution of the Complement C3 antibody should be determined by the researcher.

Immunogen

A synthetic peptide specific to human Complement C3 was used as the immunogen for the Complement C3 antibody.

Storage

Store the Complement C3 antibody at -20oC.