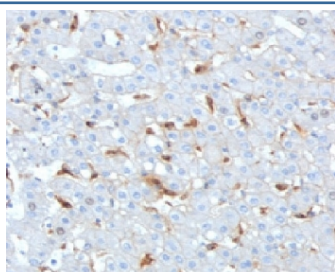


Complement C1q B-Chain Antibody / C1QB [clone C1QB/2962] (V8815)

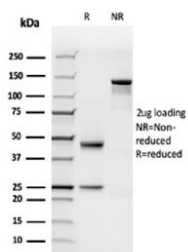
Catalog No.	Formulation	Size
V8815-100UG	0.2 mg/ml in 1X PBS with 0.1 mg/ml BSA (US sourced), 0.05% sodium azide	100 ug
V8815-20UG	0.2 mg/ml in 1X PBS with 0.1 mg/ml BSA (US sourced), 0.05% sodium azide	20 ug
V8815SAF-100UG	1 mg/ml in 1X PBS; BSA free, sodium azide free	100 ug

[Bulk quote request](#)

Availability	1-3 business days
Species Reactivity	Human
Format	Purified
Clonality	Monoclonal (mouse origin)
Isotype	Mouse IgG, kappa
Clone Name	C1QB/2962
Purity	Protein A/G affinity
UniProt	P02746
Localization	Cell surface, Cytoplasm
Applications	Immunohistochemistry (FFPE) : 1-2ug/ml
Limitations	This Complement C1q B-Chain antibody is available for research use only.



IHC staining of FFPE human hepatocellular carcinoma tissue with Complement C1q B-Chain antibody (clone C1QB/2962). HIER: boil tissue sections in pH 9 10mM Tris with 1mM EDTA for 20 min and allow to cool before testing.



SDS-PAGE analysis of purified, BSA-free Complement C1q B-Chain antibody (C1QB/2962) as confirmation of integrity and purity.

Description

C1q, a subcomponent of the classical complement pathway, is composed of nine subunits that mediate classical complement activation and thereby play an important role in the immune response. Six of these subunits are disulfide-linked dimers of chains A and B, while three of these subunits, designated C1q-A through C1q-C, are disulfide-linked dimers of chain C. Each chain contains an N-terminal collagen-like region and a C-terminal C1q globular domain. The presence of receptors for C1q on effector cells modulates its activity, which may be antibody-dependent or independent. Macrophages are the primary source of C1q, while anti-inflammatory drugs as well as cytokines differentially regulate expression of the mRNA as well as the protein. C1q deficiency is associated with lupus erythematosus and glomerulonephritis.

Application Notes

Optimal dilution of the Complement C1q B-Chain antibody should be determined by the researcher.

Immunogen

A portion of amino acids 41-188 was used as the immunogen for the Complement C1q B-Chain antibody.

Storage

Aliquot the Complement C1q B-Chain antibody and store frozen at -20°C or colder. Avoid repeated freeze-thaw cycles.