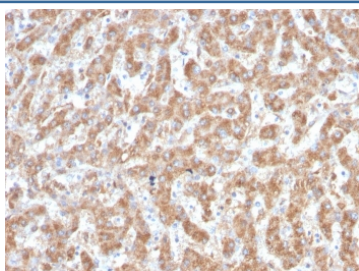


## Complement C1q A-Chain Antibody / C1QA [clone C1QA/2952] (V8059)

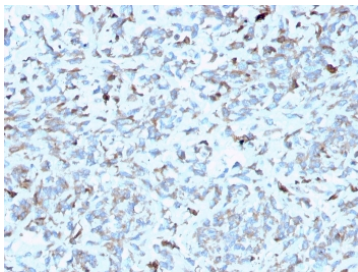
Catalog No.	Formulation	Size
V8059-100UG	0.2 mg/ml in 1X PBS with 0.1 mg/ml BSA (US sourced) and 0.05% sodium azide	100 ug
V8059-20UG	0.2 mg/ml in 1X PBS with 0.1 mg/ml BSA (US sourced) and 0.05% sodium azide	20 ug
V8059SAF-100UG	1 mg/ml in 1X PBS; BSA free, sodium azide free	100 ug

**Bulk quote request**

<b>Availability</b>	1-3 business days
<b>Species Reactivity</b>	Human
<b>Format</b>	Purified
<b>Clonality</b>	Monoclonal (mouse origin)
<b>Isotype</b>	Mouse IgG2b, kappa
<b>Clone Name</b>	C1QA/2952
<b>Purity</b>	Protein G affinity chromatography
<b>UniProt</b>	P02745
<b>Localization</b>	Secreted
<b>Applications</b>	Immunohistochemistry (FFPE) : 1-2ug/ml
<b>Limitations</b>	This Complement C1q A-Chain antibody is available for research use only.

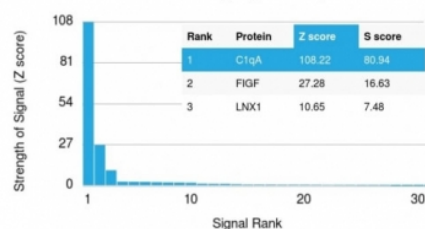


IHC staining of FFPE human liver with Complement C1q A-Chain antibody (clone C1QA/2952). HIER: boil tissue sections in pH 9 10mM Tris with 1mM EDTA for 10-20 min and allow to cool before testing.

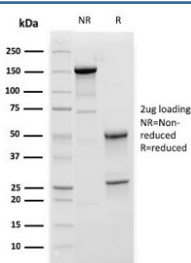


IHC staining of FFPE human kidney with Complement C1q A-Chain antibody (clone C1QA/2952). HIER: boil tissue sections in pH 9 10mM Tris with 1mM EDTA for 10-20 min and allow to cool before testing.

Human Protein Microarray Specificity Validation



Analysis of HuProt(TM) microarray containing more than 19,000 full-length human proteins using Complement C1q A-Chain antibody (clone C1QA/2952). These results demonstrate the foremost specificity of the C1QA/2952 mAb. Z- and S- score: The Z- score represents the strength of a signal that an antibody (in combination with a fluorescently-tagged anti-IgG secondary Ab) produces when binding to a particular protein on the HuProt(TM) array. Z-scores are described in units of standard deviations (SD's) above the mean value of all signals generated on that array. If the targets on the HuProt(TM) are arranged in descending order of the Z-score, the S-score is the difference (also in units of SD's) between the Z-scores. The S-score therefore represents the relative target specificity of an Ab to its intended target.



SDS-PAGE analysis of purified, BSA-free Complement C1q A-Chain antibody (clone C1QA/2952) as confirmation of integrity and purity.

## Description

C1q, a subcomponent of the classical complement pathway, is composed of nine subunits that mediate classical complement activation and thereby play an important role in the immune response. Six of these subunits are disulfide-linked dimers of chains A and B, while three of these subunits, designated C1q-A through C1q-C, are disulfide-linked dimers of chain C. Each chain contains an N-terminal collagen-like region and a C-terminal C1q globular domain. The presence of receptors for C1q on effector cells modulates its activity, which may be antibody-dependent or independent. Macrophages are the primary source of C1q, while anti-inflammatory drugs as well as cytokines differentially regulate expression of the mRNA as well as the protein. C1q deficiency is associated with lupus erythematosus and glomerulonephritis.

## Application Notes

Optimal dilution of the Complement C1q A-Chain antibody should be determined by the researcher.

## Immunogen

A recombinant human partial protein (amino acids 104-237) was used as the immunogen for the Complement C1q A-Chain antibody.

## Storage

Store the Complement C1q A-Chain antibody at 2-8oC (with azide) or aliquot and store at -20oC or colder (without azide).

