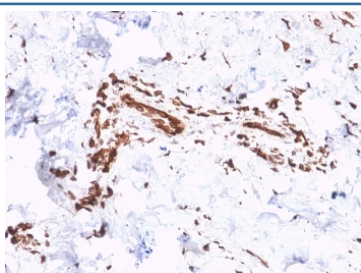


Collagen VII antibody / COL7A1 [clone LH7.2] (V7688)

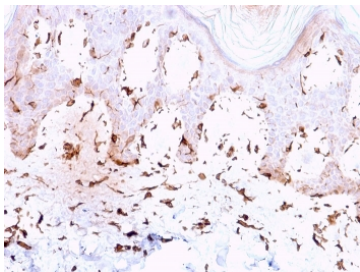
Catalog No.	Formulation	Size
V7688-100UG	0.2 mg/ml in 1X PBS with 0.1 mg/ml BSA (US sourced) and 0.05% sodium azide	100 ug
V7688-20UG	0.2 mg/ml in 1X PBS with 0.1 mg/ml BSA (US sourced) and 0.05% sodium azide	20 ug
V7688SAF-100UG	1 mg/ml in 1X PBS; BSA free, sodium azide free	100 ug

[Bulk quote request](#)

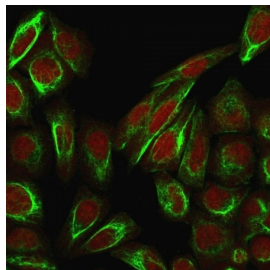
Availability	1-3 business days
Species Reactivity	Human
Format	Purified
Host	Mouse
Clonality	Monoclonal (mouse origin)
Isotype	Mouse IgG1, kappa
Clone Name	LH7.2
Purity	Protein G affinity chromatography
UniProt	Q02388
Applications	ELISA (order BSA-free Format For Coating) : Western Blot : 1-2ug/ml Flow Cytometry : 1-2ug/10 ⁶ cells Immunofluorescence : 1-2ug/ml Immunohistochemistry (FFPE) : 1-2ug/ml
Limitations	This Collagen VII antibody is available for research use only.



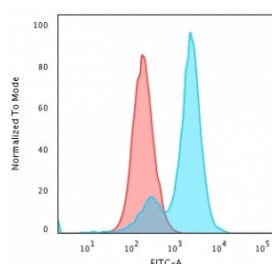
IHC staining of FFPE human skin with Collagen VII antibody (clone LH7.2). HIER: boil tissue sections in pH 9 10mM Tris with 1mM EDTA for 10-20 min and allow to cool before testing.



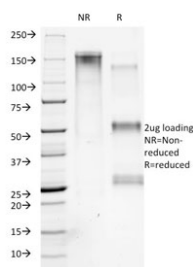
IHC staining of FFPE human skin with Collagen VII antibody (clone LH7.2). HIER: boil tissue sections in pH 9 10mM Tris with 1mM EDTA for 10-20 min and allow to cool before testing.



Immunofluorescent staining of PFA-fixed human HeLa cells with Collagen VII antibody (clone LH7.2, green) and Reddot nuclear stain (red).



Flow cytometry testing of PFA-fixed human HeLa cells with Collagen VII antibody (clone LH7.2); Red=isotype control, Blue= LH7.2 antibody.



SDS-PAGE analysis of purified, BSA-free Collagen VII antibody (clone LH7.2) as confirmation of integrity and purity.

Description

Recognizes an epitope located on collagenase digested Type VII collagen (150kDa), i.e. the non-helical carboxyl terminal region of the dimer. Binding is localized at the inferior border of the lamina densa as demonstrated by immunoelectron microscopy. Type VII is also found in the retina, where its function is unknown. It interacts with Laminin 5 and Fibronectin. Collagen VII is a stratified squamous epithelial basement membrane protein that forms anchoring fibrils which may contribute to epithelial basement membrane organization and adherence by interacting with extracellular matrix (ECM) proteins such as type IV collagen.

Application Notes

Optimal dilution of the Collagen VII antibody should be determined by the researcher.

Immunogen

A recombinant full-length human Collagen VII protein was used as the immunogen for this Collagen VII antibody.

Storage

Store the Collagen VII antibody at 2-8°C (with azide) or aliquot and store at -20°C or colder (without azide).

