

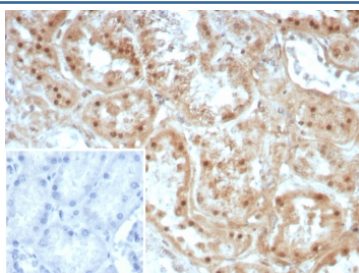
Collagen II Antibody [clone COL2A1/8810R] (V4275)

Catalog No.	Formulation	Size
V4275-100UG	0.2 mg/ml in 1X PBS with 0.1 mg/ml BSA (US sourced), 0.05% sodium azide	100 ug
V4275-20UG	0.2 mg/ml in 1X PBS with 0.1 mg/ml BSA (US sourced), 0.05% sodium azide	20 ug
V4275SAF-100UG	1 mg/ml in 1X PBS; BSA free, sodium azide free	100 ug

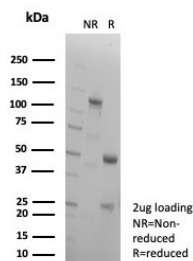
Recombinant **RABBIT MONOCLONAL**

[Bulk quote request](#)

Availability	1-3 business days
Species Reactivity	Human
Format	Purified
Host	Rabbit
Clonality	Recombinant Rabbit Monoclonal
Isotype	Rabbit IgG, kappa
Clone Name	COL2A1/8810R
Purity	Protein A/G affinity
UniProt	P02458
Localization	Secreted, Extracellular matrix
Applications	Immunohistochemistry (FFPE) : 1-2ug/ml for 30 minutes at RT
Limitations	This Collagen II antibody is available for research use only.



IHC staining of FFPE human kidney tissue with Collagen II antibody (clone COL2A1/8810R). Inset: PBS used in place of primary Ab (secondary Ab negative control). HIER: boil tissue sections in pH 9 10mM Tris with 1mM EDTA for 20 min and allow to cool before testing.



SDS-PAGE analysis of purified, BSA-free Collagen II antibody (clone COL2A1/8810R) as confirmation of integrity and purity.

Description

The extensive family of COL gene products (collagens) is composed of several chain types, including fibril-forming interstitial collagens (types I, II, III and V) and basement membrane collagens (type IV), each type containing multiple isoforms. Collagens are fibrous, extracellular matrix proteins with high tensile strength and are the major components of connective tissue, such as tendons and cartilage. All collagens contain a triple helix domain and frequently show lateral self-association in order to form complex connective tissues. Several collagens also play a role in cell adhesion, important for maintaining normal tissue architecture and function. In cartilage, Collagen Type II constitutes the bulk of the fibril. Sensitization with Collagen Type II induces an erosive polyarthritis in rats, mice and higher primates which can resemble rheumatoid arthritis and relapsing polychondritis.

Application Notes

Optimal dilution of the Collagen II antibody should be determined by the researcher.

Immunogen

Bovine collagen type II (CII) was used as the immunogen for the Collagen II antibody.

Storage

Aliquot the Collagen II antibody and store frozen at -20°C or colder. Avoid repeated freeze-thaw cycles.