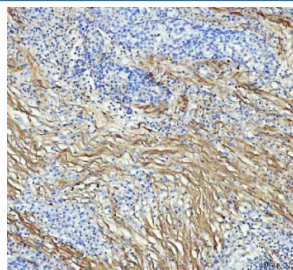


Collagen I Antibody / COL1A1 [clone AFD-3] (RQ5202)

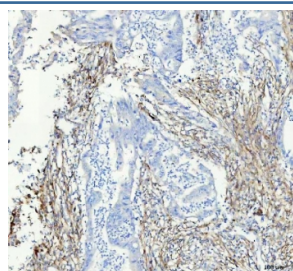
Catalog No.	Formulation	Size
RQ5202	Antibody in PBS with 0.02% sodium azide, 50% glycerol and 0.4-0.5mg/ml BSA	100 ul

[Bulk quote request](#)

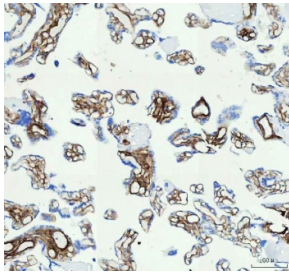
Availability	1-2 weeks
Species Reactivity	Human
Format	Purified
Host	Rabbit
Clonality	Rabbit Monoclonal
Isotype	Rabbit IgG
Clone Name	AFD-3
Purity	Affinity purified
UniProt	P02452
Applications	Western Blot : 1:500-1:2000 Immunohistochemistry (FFPE) : 1:50-1:200
Limitations	This Collagen I antibody is available for research use only.



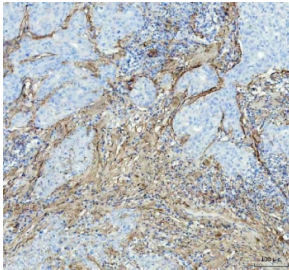
IHC staining of FFPE human lung squamous cell carcinoma tissue with Collagen I antibody. HIER: boil tissue sections in pH8 EDTA buffer, for 10-20 min and allow to cool before testing.



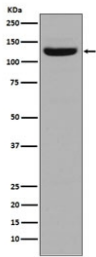
IHC staining of FFPE human colorectal adenocarcinoma tissue with Collagen I antibody. HIER: boil tissue sections in pH8 EDTA buffer, for 10-20 min and allow to cool before testing.



IHC staining of FFPE human placental tissue with Collagen I antibody. HIER: boil tissue sections in pH8 EDTA buffer, for 10-20 min and allow to cool before testing.



IHC staining of FFPE human breast cancer tissue with Collagen I antibody. HIER: boil tissue sections in pH8 EDTA buffer, for 10-20 min and allow to cool before testing.



Western blot testing of human stomach lysate with Collagen I antibody. Expected molecular weight: 100-140 kDa.

Description

Type I collagen is a member of group I collagen (fibrillar forming collagen). [UniProt]

Application Notes

Optimal dilution of the Collagen I antibody should be determined by the researcher.

Immunogen

A synthetic peptide specific to human Collagen I / COL1A1 was used as the immunogen for the Collagen I antibody.

Storage

Store the Collagen I antibody at -20oC.