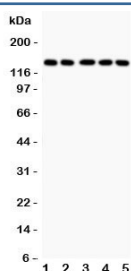


Collagen 2 Antibody / COL2A1 (R31259)

Catalog No.	Formulation	Size
R31259	0.5mg/ml if reconstituted with 0.2ml sterile DI water	100 ug

Bulk quote request

Availability	1-3 business days
Species Reactivity	Human, Mouse, Rat
Format	Antigen affinity purified
Host	Rabbit
Clonality	Polyclonal (rabbit origin)
Isotype	Rabbit IgG
Purity	Antigen affinity
Buffer	Lyophilized from 1X PBS with 2.5% BSA and 0.025% sodium azide/thimerosal
UniProt	P02458
Applications	Western Blot : 0.5-1ug/ml
Limitations	This Collagen 2 antibody is available for research use only.



Western blot testing of Collagen 2 antibody and human samples 1: COLO320; 2: HeLa; 3: MCF-7; 4: A549; 5: Jurkat lysate. Predicted molecular weight ~140 kDa.

Description

Collagen type 2 alpha 1, also known as COL2A1, is a human gene which is the major collagen synthesized by chondrocytes. COL2A1 is mapped to 12q13.11. This gene encodes the alpha-1 chain of type II collagen, a fibrillar collagen found in cartilage and the vitreous humor of the eye. Mutations in this gene are associated with achondrogenesis, chondrodysplasia, early onset familial osteoarthritis, SED congenita, Langer-Saldino achondrogenesis, Kniest dysplasia, Stickler syndrome type I, and spondyloepimetaphyseal dysplasia Strudwick type. In addition, defects in processing chondrocalcin, a calcium binding protein that is the C-propeptide of this collagen molecule, are also associated with chondrodysplasia.

Application Notes

The stated application concentrations are suggested starting amounts. Titration of the Collagen 2 antibody may be required due to differences in protocols and secondary/substrate sensitivity.

Immunogen

An amino acid sequence from the C-terminus of human COL2A1 (AFAGLGPREKGPDPQLQYMRA) was used as the immunogen for this Collagen 2 antibody.

Storage

After reconstitution, the Collagen 2 antibody can be stored for up to one month at 4°C. For long-term, aliquot and store at -20°C. Avoid repeated freezing and thawing.