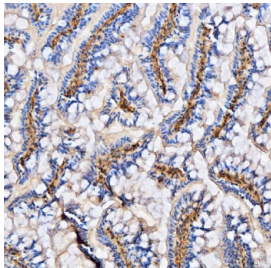


Col6a2 Antibody / Collagen VI (RQ7684)

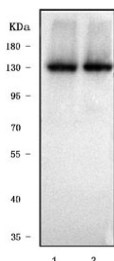
Catalog No.	Formulation	Size
RQ7684	0.5mg/ml if reconstituted with 0.2ml sterile DI water	100 ug

[Bulk quote request](#)

Availability	1-3 business days
Species Reactivity	Zebrafish
Format	Antigen affinity purified
Host	Rabbit
Clonality	Polyclonal (rabbit origin)
Isotype	Rabbit IgG
Purity	Antigen affinity purified
Buffer	Lyophilized from 1X PBS with 2% Trehalose
UniProt	E7FCV8
Applications	Western Blot : 0.5-1ug/ml Immunohistochemistry (FFPE) : 2-5ug/ml Direct ELISA : 0.1-0.5ug/ml
Limitations	This Col6a2 antibody is available for research use only.



IHC staining of FFPE zebrafish tissue with Col6a2 antibody. HIER: boil tissue sections in pH8 EDTA for 20 min and allow to cool before testing.



Western blot testing of zebrafish lysate (lanes 1 & 2) with Col6a2 cell lysate. Predicted molecular weight ~140 kDa.

Description

Collagen alpha-2(VI) chain is a protein that in humans is encoded by the COL6A2 gene. Acts upstream of or within axonogenesis; muscle cell development; and muscle organ development. Predicted to be active in collagen-containing extracellular matrix and extracellular space. Is expressed in several structures, including anterior segment eye; gut; integument; musculature system; and yolk syncytial layer. Human ortholog(s) of this gene implicated in Ullrich congenital muscular dystrophy. Orthologous to human COL6A2 (collagen type VI alpha 2 chain).

Application Notes

Optimal dilution of the Col6a2 antibody should be determined by the researcher.

Immunogen

E. coli-derived recombinant zebrafish protein (amino acids D734-C1015) was used as the immunogen for the Col6a2 antibody.

Storage

After reconstitution, the Col6a2 antibody can be stored for up to one month at 4°C. For long-term, aliquot and store at -20°C. Avoid repeated freezing and thawing.