

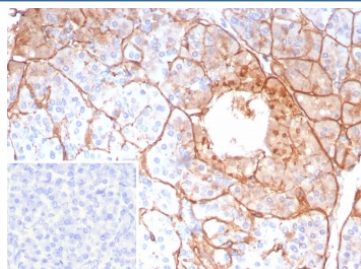
COL4A5 Antibody / Collagen IV [clone COL4A5/9396R] (V5531)

Catalog No.	Formulation	Size
V5531-100UG	0.2 mg/ml in 1X PBS with 0.1 mg/ml BSA (US sourced), 0.05% sodium azide	100 ug
V5531-20UG	0.2 mg/ml in 1X PBS with 0.1 mg/ml BSA (US sourced), 0.05% sodium azide	20 ug
V5531SAF-100UG	1 mg/ml in 1X PBS; BSA free, sodium azide free	100 ug

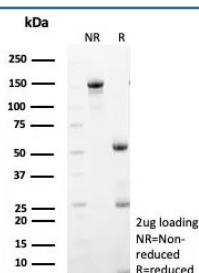
Recombinant **RABBIT MONOCLONAL**

[Bulk quote request](#)

Availability	1-3 business days
Species Reactivity	Human
Format	Purified
Clonality	Recombinant Rabbit Monoclonal
Isotype	Rabbit IgG, kappa
Clone Name	COL4A5/9396R
Purity	Protein A/G affinity
UniProt	P29400
Applications	Immunohistochemistry (FFPE) : 1-2ug/ml
Limitations	This COL4A5 antibody is available for research use only.



IHC staining of FFPE human pancreas tissue with COL4A5 antibody (clone COL4A5/9396R). Inset: PBS used in place of primary Ab (secondary Ab negative control). HIER: boil tissue sections in pH 9 10mM Tris with 1mM EDTA for 20 min and allow to cool before testing.



SDS-PAGE analysis of purified, BSA-free COL4A5 (COL4A5/9396R) as confirmation of integrity and purity.

Description

Type IV collagen is the major structural component of the glomerular basement membrane (GBM), forming a hexagonal network together with lamins, proteoglycans, and nestin. Deletions of the N-terminal regions of COL4A5 and COL4A6 were found in Xq22.3 chromosome deletion syndrome and were located in an end-to-end manner. This results in a phenotype characteristic of diffuse leiomyomatosis and Alport syndrome (DL-ATS).

Application Notes

Optimal dilution of the COL4A5 antibody should be determined by the researcher.

Immunogen

A recombinant fragment (within amino acids 1400-1685) of human COL4A protein was used as the immunogen for the COL4A5 antibody.

Storage

Aliquot the COL4A5 antibody and store frozen at -20oC or colder. Avoid repeated freeze-thaw cycles.