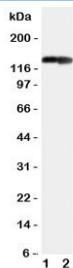


COL2A1 Antibody / Collagen II (R31260)

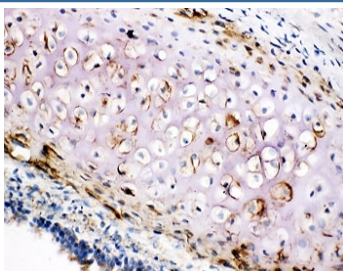
Catalog No.	Formulation	Size
R31260	0.5mg/ml if reconstituted with 0.2ml sterile DI water	100 ug

Bulk quote request

Availability	1-3 business days
Species Reactivity	Mouse, Rat
Format	Antigen affinity purified
Clonality	Polyclonal (rabbit origin)
Isotype	Rabbit IgG
Purity	Antigen affinity
Buffer	Lyophilized from 1X PBS with 2.5% BSA and 0.025% sodium azide/thimerosal
UniProt	P28481
Applications	Western Blot : 0.5-1ug/ml IHC (Frozen) : 0.5-1ug/ml
Limitations	This COL2A1 antibody is available for research use only.



Western blot testing of COL2A1 antibody and Lane 1: rat heart; 2: rat brain tissue lysate. Predicted molecular weight ~140 kDa.



IHC-F testing of COL2A1 antibody and rat trachea tissue

Description

Collagen type 2 alpha 1, also known as COL2A1, is the major collagen synthesized by chondrocytes. It is a fibrillar collagen found in cartilage and the vitreous humor of the eye.

Application Notes

The stated application concentrations are suggested starting amounts. Titration of the COL2A1 antibody may be required due to differences in protocols and secondary/substrate sensitivity.

Immunogen

An amino acid sequence from the C-terminus of mouse Collagen type 2 (AFAGLGQREKGPDPMQYMRA) was used as the immunogen for this COL2A1 antibody.

Storage

After reconstitution, the COL2A1 antibody can be stored for up to one month at 4°C. For long-term, aliquot and store at -20°C. Avoid repeated freezing and thawing.