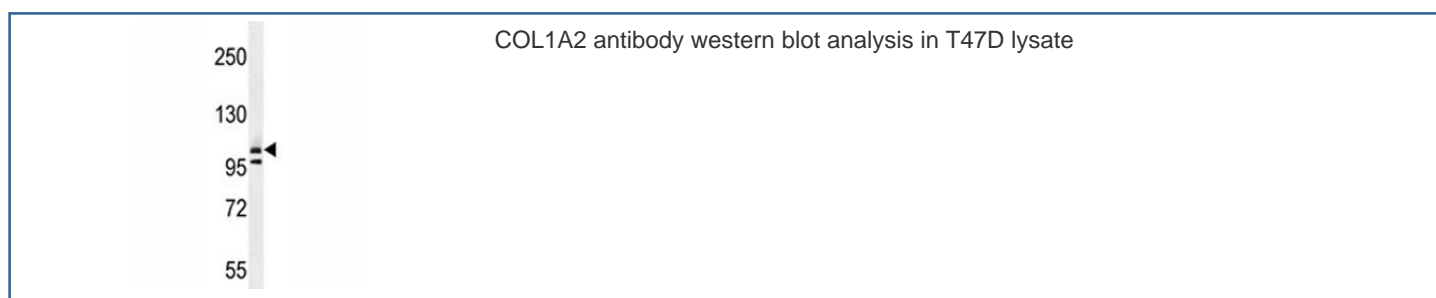


COL1A2 Antibody / Collagen Type 1 (F41539)

Catalog No.	Formulation	Size
F41539-0.4ML	In 1X PBS, pH 7.4, with 0.09% sodium azide	0.4 ml
F41539-0.08ML	In 1X PBS, pH 7.4, with 0.09% sodium azide	0.08 ml

[Bulk quote request](#)

Availability	1-3 business days
Species Reactivity	Human
Format	Antigen affinity purified
Clonality	Polyclonal (rabbit origin)
Isotype	Rabbit Ig
Purity	Antigen affinity
UniProt	P08123
Applications	Western Blot : 1:1000
Limitations	This COL1A2 antibody is available for research use only.



Description

This gene encodes the pro- α 2 chain of type I collagen whose triple helix comprises two α 1 chains and one α 2 chain. Type I is a fibril-forming collagen found in most connective tissues and is abundant in bone, cornea, dermis and tendon. Mutations in this gene are associated with osteogenesis imperfecta types I-IV, Ehlers-Danlos syndrome type VIIB, recessive Ehlers-Danlos syndrome Classical type, idiopathic osteoporosis, and atypical Marfan syndrome. Symptoms associated with mutations in this gene, however, tend to be less severe than mutations in the gene for the α 1 chain of type I collagen (COL1A1) reflecting the different role of α 2 chains in matrix integrity. Three transcripts, resulting from the use of alternate polyadenylation signals, have been identified for this gene. [provided by R. Dalgleish].

Application Notes

Titration of the COL1A2 antibody may be required due to differences in protocols and secondary/substrate sensitivity.

Immunogen

A portion of amino acids 16-43 from the human protein was used as the immunogen for this COL1A2 antibody.

Storage

Aliquot the COL1A2 antibody and store frozen at -20oC or colder. Avoid repeated freeze-thaw cycles.