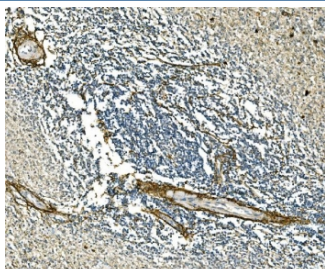


## COL1A1 Antibody / Collagen I (R31257)

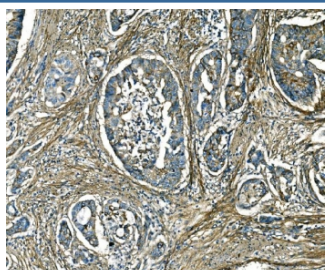
Catalog No.	Formulation	Size
R31257	0.5mg/ml if reconstituted with 0.2ml sterile DI water	100 ug

**Bulk quote request**

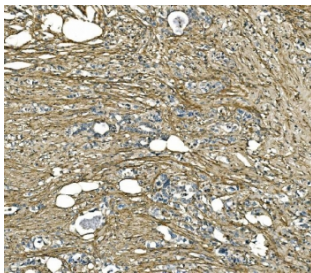
<b>Availability</b>	1-3 business days
<b>Species Reactivity</b>	Human, Mouse
<b>Format</b>	Antigen affinity purified
<b>Host</b>	Rabbit
<b>Clonality</b>	Polyclonal (rabbit origin)
<b>Isotype</b>	Rabbit IgG
<b>Purity</b>	Antigen affinity
<b>Buffer</b>	Lyophilized from 1X PBS with 2% Trehalose
<b>UniProt</b>	P02452
<b>Localization</b>	Cytoplasmic
<b>Applications</b>	Western Blot : 0.5-1ug/ml Immunohistochemistry (FFPE) : 2-5ug/ml
<b>Limitations</b>	This COL1A1 antibody is available for research use only.



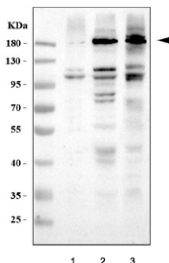
IHC staining of FFPE human spleen tissue with COL1A1 antibody. HIER: boil tissue sections in pH8 EDTA for 20 min and allow to cool before testing.



IHC staining of FFPE human colon adenocarcinoma tissue with COL1A1 antibody. HIER: boil tissue sections in pH8 EDTA for 20 min and allow to cool before testing.



IHC staining of FFPE human gastric carcinoma tissue with COL1A1 antibody. HIER: boil tissue sections in pH8 EDTA for 20 min and allow to cool before testing.



Western blot testing of 1) human HK2, 2) human HCC and 3) mouse NIH 3T3 cell lysate with COL1A1 antibody. Expected molecular weight: 140-210 kDa (precursor), 70-90 kDa (mature).

## Description

Collagen type I alpha 1, also known as COL1A1, is a human gene that encodes the major component of type I collagen, the fibrillar collagen found in most connective tissues, including cartilage. Type I is a fibril-forming collagen found in most connective tissues and is abundant in bone, cornea, dermis and tendon.

## Application Notes

The stated application concentrations are suggested starting amounts. Titration of the COL1A1 antibody may be required due to differences in protocols and secondary/substrate sensitivity.

## Immunogen

An amino acid sequence from the C-terminus of human Collagen I (QPPQEKAHDGGGRYYRA) was used as the immunogen for this COL1A1 antibody.

## Storage

After reconstitution, the COL1A1 antibody can be stored for up to one month at 4°C. For long-term, aliquot and store at -20°C. Avoid repeated freezing and thawing.