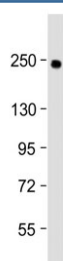


COL14A1 Antibody (Center Region) (F54164)

Catalog No.	Formulation	Size
F54164-0.2ML	In 1X PBS, pH 7.4, with 0.09% sodium azide	0.2 ml
F54164-0.05ML	In 1X PBS, pH 7.4, with 0.09% sodium azide	0.05 ml

[Bulk quote request](#)

Availability	1-3 business days
Species Reactivity	Human
Format	Antigen affinity purified
Clonality	Polyclonal (rabbit origin)
Isotype	Rabbit Ig
Purity	Antigen affinity
UniProt	Q05707
Applications	Western Blot : 1:1000-1:2000
Limitations	This COL14A1 antibody is available for research use only.



Description

Plays an adhesive role by integrating collagen bundles. It is probably associated with the surface of interstitial collagen fibrils via COL1. The COL2 domain may then serve as a rigid arm which sticks out from the fibril and protrudes the large N-terminal globular domain into the extracellular space, where it might interact with other matrix molecules or cell surface receptors (By similarity).

Application Notes

The stated application concentrations are suggested starting points. Titration of the COL14A1 antibody may be required due to differences in protocols and secondary/substrate sensitivity.

Immunogen

A portion of amino acids 643-677 from human COL14A1 was used as the immunogen for the COL14A1 antibody.

Storage

Aliquot the COL14A1 antibody and store frozen at -20oC or colder. Avoid repeated freeze-thaw cycles.