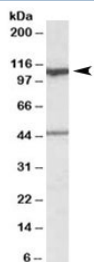


COG1 Antibody (R34351)

Catalog No.	Formulation	Size
R34351-100UG	0.5 mg/ml in 1X TBS, pH7.3, with 0.5% BSA (US sourced) and 0.02% sodium azide	100 ug

[Bulk quote request](#)

Availability	1-3 business days
Species Reactivity	Human
Format	Antigen affinity purified
Host	Goat
Clonality	Polyclonal (goat origin)
Isotype	Goat Ig
Purity	Antigen affinity
Gene ID	9382
Applications	Western Blot : 0.1-0.3ug/ml ELISA (peptide) LOD : 1:64000
Limitations	This COG1 antibody is available for research use only.



Western blot testing of human cerebellum lysate with COG1 antibody at 0.1ug/ml. The expected ~110kDa band and the additional ~45kDa band are both blocked by the immunizing peptide.

Description

Additional name(s) for this target protein: Component of oligomeric golgi complex 1

Application Notes

Optimal dilution of the COG1 antibody should be determined by the researcher.

Immunogen

Amino acids KAKSTRNIETKAQ were used as the immunogen for this COG1 antibody.

Storage

Aliquot and store the COG1 antibody at -20oC.