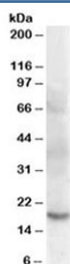


## Cofilin 2 Antibody / CFL2 (R33482)

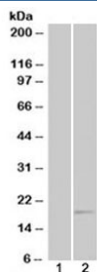
Catalog No.	Formulation	Size
R33482-100UG	0.5 mg/ml in 1X TBS, pH7.3, with 0.5% BSA (US sourced) and 0.02% sodium azide	100 ug

[Bulk quote request](#)

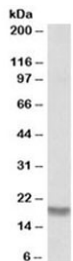
Availability	1-3 business days
Species Reactivity	Human, Rat
Predicted Reactivity	Dog, Mouse, Pig
Format	Antigen affinity purified
Host	Goat
Clonality	Polyclonal (goat origin)
Isotype	Goat Ig
Purity	Antigen affinity
Gene ID	1073
Localization	Cytoplasmic
Applications	Western Blot : 0.01-0.03ug/ml IHC (FFPE) : 3.75ug/ml ELISA (peptide) LOD : 1:128000
Limitations	This Cofilin 2 antibody is available for research use only.



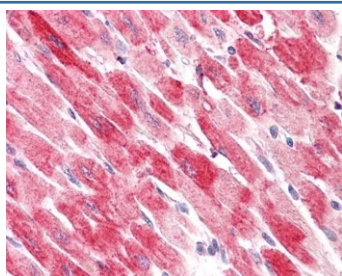
Western blot testing of human skeletal muscle lysate with Cofilin 2 antibody at 0.003ug/ml. Predicted molecular weight: ~19 kDa.



Western blot of HEK293 lysate overexpressing human Cofilin 2 probed with Cofilin 2 antibody (mock transfection in lane 1). Predicted molecular weight: ~19 kDa.



Western blot of rat skeletal muscle lysate with Cofilin 2 antibody at 0.001ug/ml. Predicted molecular weight: ~19 kDa.



IHC testing of FFPE human heart tissue with Cofilin 2 antibody at 3.75ug/ml. Required HIER: steamed antigen retrieval with pH6 citrate buffer; AP-staining.

## Description

Additional name(s) for this target protein: CFL2; NEM7

## Application Notes

Optimal dilution of the Cofilin 2 antibody should be determined by the researcher.

## Immunogen

Amino acids DIKDRSTLGEK were used as the immunogen for this Cofilin 2 antibody.

## Storage

Aliquot and store the Cofilin 2 antibody at -20oC.