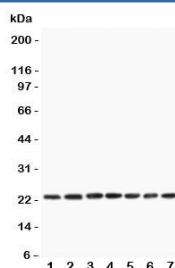


CNTF Antibody (R31496)

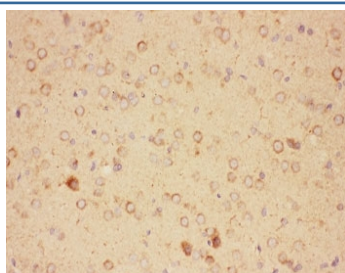
Catalog No.	Formulation	Size
R31496	0.5mg/ml if reconstituted with 0.2ml sterile DI water	100 ug

Bulk quote request

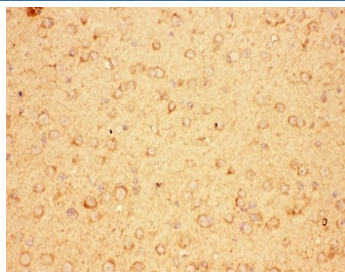
Availability	1-3 business days
Species Reactivity	Mouse, Rat
Format	Antigen affinity purified
Clonality	Polyclonal (rabbit origin)
Isotype	Rabbit IgG
Purity	Antigen affinity
Buffer	Lyophilized from 1X PBS with 2.5% BSA and 0.025% sodium azide
Gene ID	25707
Applications	Western Blot : 0.5-1ug/ml IHC (FFPE) : 0.5-1ug/ml ELISA : 0.1-0.5ug/ml (rat protein tested); request BSA free format for coating
Limitations	This CNTF antibody is available for research use only.



Western blot testing of CNTF antibody and rat samples 1: PC12; 2: NRK; 3: RH35; 4: brain; 5: liver; 6: spleen; 7: testis lysate. Expected/observed molecular weight ~23 kDa.



IHC-P: CNTF antibody testing of rat brain tissue



IHC-P: CNTF antibody testing of mouse brain tissue

Description

Ciliary neurotrophic factor is a protein that in humans is encoded by the CNTF gene. The protein encoded by this gene is a polypeptide hormone and nerve growth factor whose actions have mainly been studied in the nervous system where it promotes neurotransmitter synthesis and neurite outgrowth in certain neural populations including astrocytes. It is mapped to 11q12.1. In addition to neurotrophic effects on parasympathetic neurons, CNTF was shown to have activities on sympathetic and sensory neurons. It appears not to be involved in motor neuron survival during development and has a trophic influence on degenerating striatal neurons as well as on critical nonstriatal regions. CNTF plays a role in a cardiac signal transduction pathway that regulates obesity-related left ventricular hypertrophy.

Application Notes

Titration of the CNTF antibody may be required due to differences in protocols and secondary/substrate sensitivity.

Immunogen

Rat partial recombinant protein (AA 2-200) was used as the immunogen for this CNTF antibody.

Storage

The lyophilized CNTF antibody can be stored at 4°C to -20°C. After reconstitution, aliquot and store at -20°C. Avoid repeated freeze/thaws.