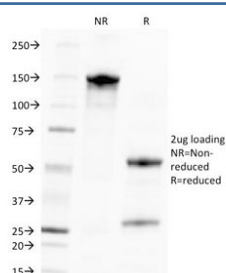


CMV Antibody / Cytomegalovirus / CMV-p65 [clone CMV100] (V2332)

Catalog No.	Formulation	Size
V2332-100UG	0.2 mg/ml in 1X PBS with 0.1 mg/ml BSA (US sourced) and 0.05% sodium azide	100 ug
V2332-20UG	0.2 mg/ml in 1X PBS with 0.1 mg/ml BSA (US sourced) and 0.05% sodium azide	20 ug
V2332SAF-100UG	1 mg/ml in 1X PBS; BSA free, sodium azide free	100 ug

[Bulk quote request](#)

Availability	Discontinued
Species Reactivity	Cytomegalovirus
Format	Purified
Host	Mouse
Clonality	Monoclonal (mouse origin)
Isotype	Mouse IgG1, kappa
Clone Name	CMV100
Purity	Protein G affinity
Buffer	1X PBS, pH 7.4
Gene ID	Not Applicable
Localization	Nuclear
Applications	ELISA : 1-5ug/ml for coating (order BSA/sodium azide-free format)
Limitations	This CMV antibody is available for research use only.



SDS-PAGE Analysis of Purified, BSA-Free CMV Antibody (clone CMV100). Confirmation of Integrity and Purity of the Antibody.

Description

Ten to forty percent of the patients with acquired immunodeficiency syndrome (AIDS) develop Cytomegalovirus infections. In some patients with AIDS, the virus is detected in the bronchoalveolar lavage fluid (BALF), urine, and other specimens, even when there are no symptoms of the disease. An indicator of active infection is needed to facilitate the diagnosis of cytomegalovirus disease in patients with AIDS or HIV infection. Cytomegalovirus was detected in the leukocytes of both the peripheral blood and BALF during the early phase of the disease.

Application Notes

The concentration stated for each application is a general starting point. Variations in protocols, secondaries and substrates may require the CMV antibody to be titrated up or down for optimal performance.

Storage

Store the CMV antibody at 2-8oC (with azide) or aliquot and store at -20oC or colder (without azide).

Alternate Names

Cytomegalovirus / CMV antibody

References (1)