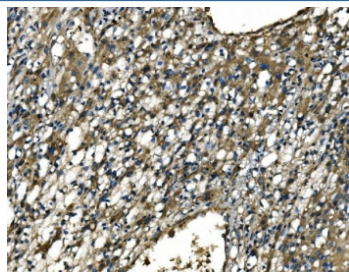


CMKBRL1 Antibody / CX3CR1 (RQ6969)

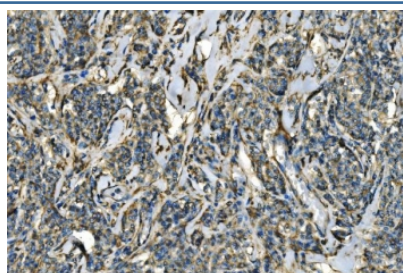
Catalog No.	Formulation	Size
RQ6969	0.5mg/ml if reconstituted with 0.2ml sterile DI water	100 ug

Bulk quote request

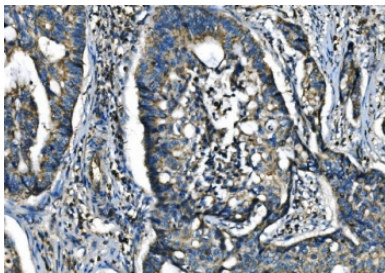
Availability	1-3 business days
Species Reactivity	Human
Format	Antigen affinity purified
Host	Rabbit
Clonality	Polyclonal (rabbit origin)
Isotype	Rabbit IgG
Purity	Antigen affinity purified
Buffer	Lyophilized from 1X PBS with 2% Trehalose
UniProt	P49238
Applications	Immunohistochemistry (FFPE) : 2-5ug/ml Flow Cytometry : 1-3ug/million cells Direct ELISA : 0.1-0.5ug/ml
Limitations	This CMKBRL1 antibody is available for research use only.



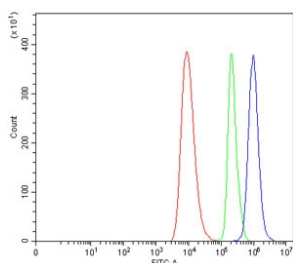
IHC staining of FFPE human liver cancer tissue with CMKBRL1 antibody. HIER: boil tissue sections in pH8 EDTA for 20 min and allow to cool before testing.



IHC staining of FFPE human lymphoma tissue with CMKBRL1 antibody. HIER: boil tissue sections in pH8 EDTA for 20 min and allow to cool before testing.



IHC staining of FFPE human adenocarcinoma of the right colon tissue with CMKBRL1 antibody. HIER: boil tissue sections in pH8 EDTA for 20 min and allow to cool before testing.



Flow cytometry testing of human HEL cells with CMKBRL1 antibody at 1ug/million cells (blocked with goat sera); Red=cells alone, Green=isotype control, Blue= CMKBRL1 antibody.

Description

CX3C chemokine receptor 1 (CX3CR1) also known as the fractalkine receptor or G-protein coupled receptor 13 (GPR13) and Beta chemokine receptor-like 1 (CMKBRL1) is a protein that in humans is encoded by the CX3CR1 gene. Fractalkine is a transmembrane protein and chemokine involved in the adhesion and migration of leukocytes. The protein encoded by this gene is a receptor for fractalkine. The encoded protein also is a coreceptor for HIV-1, and some variations in this gene lead to increased susceptibility to HIV-1 infection and rapid progression to AIDS. Four transcript variants encoding two different isoforms have been found for this gene.

Application Notes

Optimal dilution of the CMKBRL1 antibody should be determined by the researcher.

Immunogen

Recombinant human protein (amino acids M1-H345) was used as the immunogen for the CMKBRL1 antibody.

Storage

After reconstitution, the CMKBRL1 antibody can be stored for up to one month at 4°C. For long-term, aliquot and store at -20°C. Avoid repeated freezing and thawing.