


## CMGA Antibody / Chromogranin A (F54612)

Catalog No.	Formulation	Size
F54612-0.4ML	In 1X PBS, pH 7.4, with 0.09% sodium azide	0.4 ml
F54612-0.08ML	In 1X PBS, pH 7.4, with 0.09% sodium azide	0.08 ml

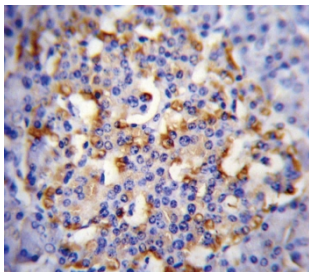
[Bulk quote request](#)

<b>Availability</b>	1-3 business days
<b>Species Reactivity</b>	Human
<b>Format</b>	Purified
<b>Host</b>	Rabbit
<b>Clonality</b>	Polyclonal (rabbit origin)
<b>Isotype</b>	Rabbit Ig
<b>Purity</b>	Antigen affinity purified
<b>UniProt</b>	P10645
<b>Localization</b>	Cytoplasmic
<b>Applications</b>	Flow Cytometry : 1:25 (1x10 <sup>6</sup> cells) Immunofluorescence : 1:25 Immunohistochemistry (FFPE) : 1:25 Western Blot : 1:500-1:2000
<b>Limitations</b>	This CMGA antibody is available for research use only.

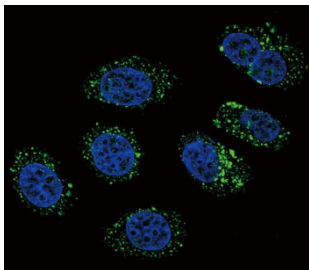
kDa  
130  
95  
72  
55  
36  
28



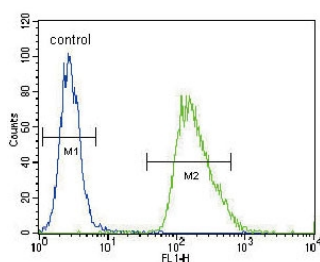
Western blot testing of human A549 cell lysate with CMGA antibody. Expected molecular weight: 50-75 kDa depending on glycosylation level.



IHC testing of FFPE human pancreas tissue with CMGA antibody. HIER: steam section in pH6 citrate buffer for 20 min and allow to cool prior to staining.



Immunofluorescent staining of human A549 cells with CMGA antibody (green) and DAPI nuclear stain (blue).



Flow cytometry testing of human A549 cells with CMGA antibody; Blue=isotype control, Green= CMGA antibody.

## Description

The protein encoded by this gene is a member of the chromogranin/secretogranin family of neuroendocrine secretory proteins. It is found in secretory vesicles of neurons and endocrine cells. This gene product is a precursor to three biologically active peptides; vasostatin, pancreastatin, and parastatin. These peptides act as autocrine or paracrine negative modulators of the neuroendocrine system. Other peptides, including chromostatin, beta-granin, WE-14 and GE-25, are also derived from the full-length protein. However, biological activities for these molecules have not been shown.

## Application Notes

The stated application concentrations are suggested starting points. Titration of the CMGA antibody may be required due to differences in protocols and secondary/substrate sensitivity.

## Immunogen

A portion of amino acids 376-404 from the human protein was used as the immunogen for the CMGA antibody.

## Storage

Aliquot the CMGA antibody and store frozen at -20oC or colder. Avoid repeated freeze-thaw cycles.

