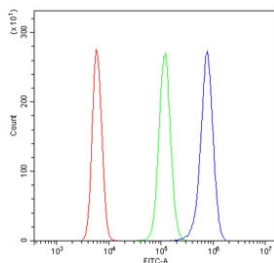


## CMBL Antibody / LOC134147 (RQ5807)

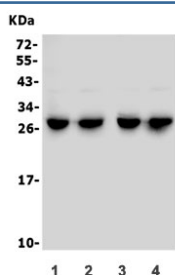
Catalog No.	Formulation	Size
RQ5807	0.5mg/ml if reconstituted with 0.2ml sterile DI water	100 ug

[Bulk quote request](#)

<b>Availability</b>	1-3 business days
<b>Species Reactivity</b>	Mouse, Rat
<b>Format</b>	Antigen affinity purified
<b>Host</b>	Rabbit
<b>Clonality</b>	Polyclonal (rabbit origin)
<b>Isotype</b>	Rabbit IgG
<b>Purity</b>	Affinity purified
<b>Buffer</b>	Lyophilized from 1X PBS with 2% Trehalose and 0.025% sodium azide
<b>UniProt</b>	Q8R1G2
<b>Applications</b>	Western Blot : 0.5-1ug/ml Flow Cytometry : 1-3ug/million cells
<b>Limitations</b>	This CMBL antibody is available for research use only.



Flow cytometry testing of mouse RAW264.7 cells with CMBL antibody at 1ug/million cells (blocked with goat sera); Red=cells alone, Green=isotype control, Blue= CMBL antibody.



Western blot testing of 1) mouse liver, 2) mouse kidney, 3) rat liver and 4) rat kidney lysate with CMBL antibody. Predicted molecular weight ~28 kDa.

## Description

CMBL is a cysteine hydrolase of the diene lactone hydrolase family that is highly expressed in liver cytosol. CMBL preferentially cleaves cyclic esters, and it activates medoxomil-ester prodrugs in which the medoxomil moiety is linked to an oxygen atom.

## Application Notes

Optimal dilution of the CMBL antibody should be determined by the researcher.

## Immunogen

Amino acids YIEEARRNLIEWLNKYV from the mouse protein were used as the immunogen for the CMBL antibody.

## Storage

After reconstitution, the CMBL antibody can be stored for up to one month at 4°C. For long-term, aliquot and store at -20°C. Avoid repeated freezing and thawing.