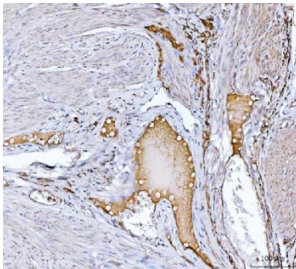


Clusterin Antibody / CLU (RQ7160)

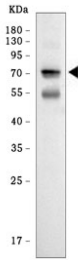
Catalog No.	Formulation	Size
RQ7160	0.5mg/ml if reconstituted with 0.2ml sterile DI water	100 ug

Bulk quote request

Availability	1-3 business days
Species Reactivity	Human
Format	Antigen affinity purified
Host	Rabbit
Clonality	Polyclonal (rabbit origin)
Isotype	Rabbit IgG
Purity	Antigen affinity purified
Buffer	Lyophilized from 1X PBS with 2% Trehalose
UniProt	P10909
Localization	Nucleus, Cytoplasm
Applications	Western Blot : 0.5-1ug/ml Immunohistochemistry (FFPE) : 2-5ug/ml Direct ELISA : 0.1-0.5ug/ml
Limitations	This Clusterin antibody is available for research use only.



Clusterin Antibody Endometrial Cancer IHC. Immunohistochemistry staining of FFPE human endometrial cancer tissue with Clusterin antibody. HIER: boil tissue sections in pH8 EDTA for 20 min and allow to cool before testing.



Clusterin Antibody Human Placenta WB. Western blot testing of human placental tissue lysate with Clusterin antibody. Predicted molecular weight: 75-80 kDa (heterodimer precursor), 36-39 kDa (alpha subunit), 34-36 kDa (beta subunit).

Description

Clusterin Antibody detects Clusterin protein, a secreted chaperone that can under some stress conditions also be found in the cell cytosol. It has been suggested to be involved in several basic biological events such as cell death, tumor progression, and neurodegenerative disorders. Alternate splicing results in both coding and non-coding variants.

This Clusterin antibody complements a related [Clusterin antibody](#) used to study CLU, APO-J, and Apolipoprotein J biology.

Application Notes

Optimal dilution of the Clusterin antibody should be determined by the researcher.

Immunogen

Recombinant human protein (amino acids A108-Q320) was used as the immunogen for the Clusterin antibody.

Storage

After reconstitution, the Clusterin antibody can be stored for up to one month at 4oC. For long-term, aliquot and store at -20oC. Avoid repeated freezing and thawing.