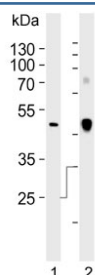


Clusterin Antibody / CLU / Apolipoprotein J / APO-J (F54344)

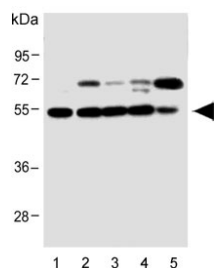
Catalog No.	Formulation	Size
F54344-0.4ML	In 1X PBS, pH 7.4, with 0.09% sodium azide	0.4 ml
F54344-0.08ML	In 1X PBS, pH 7.4, with 0.09% sodium azide	0.08 ml

Bulk quote request

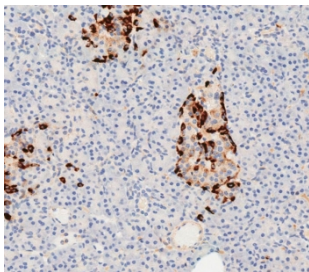
Availability	1-3 business days
Species Reactivity	Human, Mouse, Rat
Format	Purified
Clonality	Polyclonal (rabbit origin)
Isotype	Rabbit Ig
Purity	Antigen affinity purified
UniProt	P10909
Applications	Western Blot : 1:500-1:2000 Flow Cytometry : 1:25 (1x10 ⁶ cells) Immunohistochemistry (FFPE) : 1:25
Limitations	This Clusterin antibody is available for research use only.



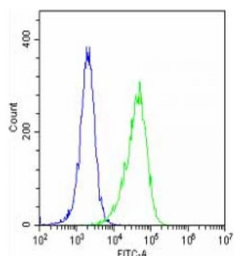
Western blot testing of human 1) A549 and 2) plasma lysate with Clusterin antibody.



Western blot testing of human 1) HepG2, 2) MCF7, 3) Caco-2, 4) HeLa and 5) A549 lysate with Clusterin antibody.



IHC testing of FFPE human pancreas tissue with Clusterin antibody. HIER: steam section in pH9 EDTA for 20 min and allow to cool prior to staining.



Flow cytometry testing of fixed and permeabilized human HeLa cells with Clusterin antibody; Blue=isotype control, Green= Clusterin antibody.

Description

The protein encoded by this gene appears to be involved in several basic biological events such as cell death, tumor progression, and neurodegenerative disorders. However, the function of this protein is unknown. Three transcript variants encoding different isoforms have been found for this gene, and one of them is secreted and processed into a mature form.

Application Notes

The stated application concentrations are suggested starting points. Titration of the Clusterin antibody may be required due to differences in protocols and secondary/substrate sensitivity.

Immunogen

A portion of amino acids 71-99 from the human protein was used as the immunogen for the Clusterin antibody.

Storage

Aliquot the Clusterin antibody and store frozen at -20oC or colder. Avoid repeated freeze-thaw cycles.