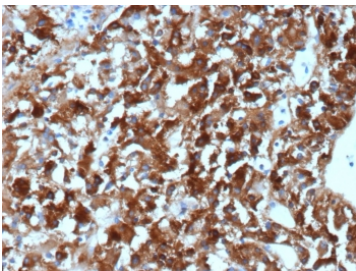


Clusterin Antibody / CLU / APO-J [clone CLU/4740] (V5664)

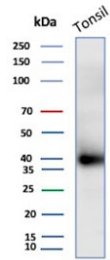
Catalog No.	Formulation	Size
V5664-100UG	0.2 mg/ml in 1X PBS with 0.1 mg/ml BSA (US sourced), 0.05% sodium azide	100 ug
V5664-20UG	0.2 mg/ml in 1X PBS with 0.1 mg/ml BSA (US sourced), 0.05% sodium azide	20 ug
V5664SAF-100UG	1 mg/ml in 1X PBS; BSA free, sodium azide free	100 ug

Bulk quote request

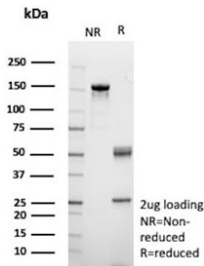
Availability	1-3 business days
Species Reactivity	Human
Format	Purified
Host	Mouse
Clonality	Monoclonal (mouse origin)
Isotype	Mouse IgG1, kappa
Clone Name	CLU/4740
Purity	Protein G affinity
UniProt	P10909
Localization	Cytoplasm, Secreted
Applications	Immunohistochemistry (FFPE) : 1-2ug/ml Western Blot : 2-4ug/ml
Limitations	This Clusterin antibody is available for research use only.



IHC staining of FFPE human adrenal gland tissue with Clusterin antibody (clone CLU/4740). HI ER: boil tissue sections in pH 9 10mM Tris with 1mM EDTA for 20 min and allow to cool before testing.



Western blot testing of human tonsil tissue lysate with Clusterin antibody. Predicted molecular weight: 75-80 kDa (heterodimer precursor), 36-39 kDa (alpha subunit), 34-36 kDa (beta subunit).



SDS-PAGE analysis of purified, BSA-free Clusterin antibody (clone CLU/4740) as confirmation of integrity and purity.

Description

Clusterin, also designated complement lysis inhibitor (CLI), apolipoprotein J (APOJ), sulfated glycoprotein 2 (SGP2), SP40 and testosterone-repressed prostate message 2 (TRPM2), is a secretory, heterodimeric glycoprotein that influences immune regulation, cell adhesion, transformation, lipid transportation, tissue remodeling, membrane recycling and cell-cell interactions. Clusterin is synthesized as a 449 amino acid polypeptide that is post-translationally cleaved at an internal bond between Arg 227 and Ser 228. Two subunits, α and β , are associated through disulfide bonds. The β subunit (also called ApoJ α) corresponds to residues 23-227. The α subunit (also called ApoJ β) corresponds to residues 228-449. Overexpression of Clusterin appears to be more common in late stages of mammary tumor progression. Clusterin markedly influences β -Amyloid structure and neuritic toxicity in vivo and may influence Alzheimer's pathogenesis.

Application Notes

Optimal dilution of the Clusterin antibody should be determined by the researcher.

Immunogen

A portion of amino acids 150-300 from human CLU protein was used as the immunogen for the Clusterin antibody.

Storage

Aliquot the Clusterin antibody and store frozen at -20°C or colder. Avoid repeated freeze-thaw cycles.