

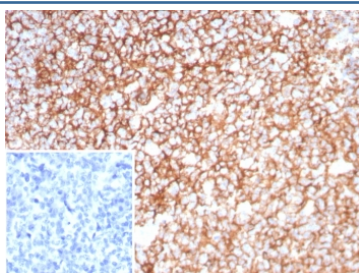
## Clusterin Antibody / Apolipoprotein J / APO-J [clone CLU/8865R] (V5240)

Catalog No.	Formulation	Size
V5240-100UG	0.2 mg/ml in 1X PBS with 0.1 mg/ml BSA (US sourced), 0.05% sodium azide	100 ug
V5240-20UG	0.2 mg/ml in 1X PBS with 0.1 mg/ml BSA (US sourced), 0.05% sodium azide	20 ug
V5240SAF-100UG	1 mg/ml in 1X PBS; BSA free, sodium azide free	100 ug

Recombinant **RABBIT MONOCLONAL**

[Bulk quote request](#)

<b>Availability</b>	1-3 business days
<b>Species Reactivity</b>	Human
<b>Format</b>	Purified
<b>Host</b>	Rabbit
<b>Clonality</b>	Recombinant Rabbit Monoclonal
<b>Isotype</b>	Rabbit IgG, kappa
<b>Clone Name</b>	CLU/8865R
<b>Purity</b>	Protein A/G affinity
<b>UniProt</b>	P10909
<b>Localization</b>	Nucleus, Cytoplasm
<b>Applications</b>	Immunohistochemistry (FFPE) : 1-2ug/ml for 30 min at RT
<b>Limitations</b>	This Clusterin antibody is available for research use only.



IHC staining of FFPE human tonsil tissue with Clusterin antibody (clone CLU/8865R). Inset: PBS used in place of primary Ab (secondary Ab negative control). HIER: boil tissue sections in pH 9 10mM Tris with 1mM EDTA for 20 min and allow to cool before testing.

## Description

Clusterin, also designated complement lysis inhibitor (CLI), apolipoprotein J (APOJ), sulfated glycoprotein 2 (SGP2), SP40 and testosterone-repressed prostate message 2 (TRPM2), is a secretory, heterodimeric glycoprotein that influences

immune regulation, cell adhesion, transformation, lipid transportation, tissue remodeling, membrane recycling and cell-cell interactions. Clusterin is synthesized as a 449 amino acid polypeptide that is post-translationally cleaved at an internal bond between Arg 227 and Ser 228. Two subunits, Alpha and beta, are associated through disulfide bonds. The beta subunit (also called ApoJAlpha) corresponds to residues 23-227. The Alpha subunit (also called ApoJbeta) corresponds to residues 228-449. Overexpression of Clusterin appears to be more common in late stages of mammary tumor progression. Clusterin markedly influences beta-Amyloid structure and neuritic toxicity in vivo and may influence Alzheimer's pathogenesis.

## Application Notes

Optimal dilution of the Clusterin antibody should be determined by the researcher.

## Immunogen

A recombinant partial protein sequence (within amino acids 249-449) from the human protein was used as the immunogen for the Clusterin antibody.

## Storage

Aliquot the Clusterin antibody and store frozen at -20°C or colder. Avoid repeated freeze-thaw cycles.