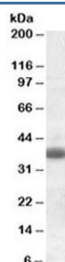


## Clu Antibody / Clusterin / Apolipoprotein J / APO-J (R33815)

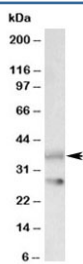
Catalog No.	Formulation	Size
R33815-100UG	0.5 mg/ml in 1X TBS, pH7.3, with 0.5% BSA (US sourced) and 0.02% sodium azide	100 ug

[Bulk quote request](#)

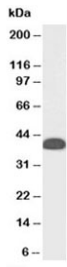
Availability	1-3 business days
Species Reactivity	Human, Rat
Predicted Reactivity	Mouse
Format	Antigen affinity purified
Clonality	Polyclonal (goat origin)
Isotype	Goat Ig
Purity	Antigen affinity
Gene ID	12759
Applications	Western Blot : 0.3-1ug/ml ELISA (peptide) LOD : 1:8000
Limitations	This Clu antibody is available for research use only.



Western blot testing of rat brain lysate with Clu antibody at 0.3ug/ml. Predicted molecular weight: 75-80 kDa (heterodimer precursor), 36-39 kDa (alpha subunit), 34-36 kDa (beta subunit).



Western blot testing of rat brain lysate with Clu antibody at 0.1ug/ml. Predicted molecular weight: 75-80kDa (heterodimer precursor), 36-39kDa (alpha subunit), 34-36kDa (beta subunit).



Western blot testing of human testis lysate with Clu antibody at 0.3ug/ml. Predicted molecular weight: 75-80kDa (heterodimer precursor), 36-39kDa (alpha subunit), 34-36kDa (beta subunit).

## Description

Additional name(s) for this target protein: APOJ, Clusterin

## Application Notes

Optimal dilution of the Clu antibody should be determined by the researcher.

## Immunogen

Amino acids EKALQEYRRKSRAE were used as the immunogen for this Clu antibody.

## Storage

Aliquot and store the Clu antibody at -20oC.