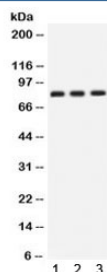


CLU Antibody / Clusterin / Apolipoprotein J / APO-J (R31938)

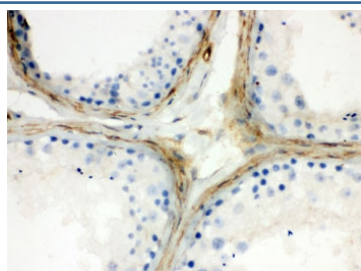
Catalog No.	Formulation	Size
R31938	0.5mg/ml if reconstituted with 0.2ml sterile DI water	100 ug

Bulk quote request

Availability	1-3 business days
Species Reactivity	Human
Format	Antigen affinity purified
Clonality	Polyclonal (rabbit origin)
Isotype	Rabbit IgG
Purity	Antigen affinity
Buffer	Lyophilized from 1X PBS with 2.5% BSA and 0.025% sodium azide
UniProt	P10909
Localization	Cytoplasmic
Applications	Western Blot : 0.1-0.5ug/ml IHC (FFPE) : 0.5-1ug/ml ELISA : 0.1-0.5ug/ml (human protein tested); request BSA-free format for coating
Limitations	This CLU antibody is available for research use only.



Western blot testing of human 1) SKOV, 2) U87 and 3) PANC cell lysate with CLU antibody. Predicted molecular weight: 75-80 kDa (heterodimer precursor), 36-39 kDa (alpha subunit), 34-36 kDa (beta subunit).



IHC testing of FFPE human testis with CLU antibody. HIER: Boil the paraffin sections in pH 6, 10mM citrate buffer for 20 minutes and allow to cool prior to staining.

Description

Clusterin (apolipoprotein J) is a 75 - 80 kDa disulfide-linked heterodimeric protein associated with the clearance of cellular debris and apoptosis. In humans, clusterin is encoded by the CLU gene. This protein has several synonyms: dimeric acidic glycoprotein (DAG protein), testosterone repressed prostate message-2 (TRPM-2), sulfated glycoprotein-2 (SGP-2) and complement lysis inhibitor (CLI). Clusterin was mapped to mouse chromosome 14. Clusterin is a ubiquitously expressed molecule thought to influence a variety of processes including cell death. In the brain, it accumulates in dying neurons following seizures and hypoxic-ischemic (H-I) injury. clusterin may be a new therapeutic target to modulate non-caspase-dependent neuronal death following acute brain injury.

Application Notes

Optimal dilution of the CLU antibody should be determined by the researcher.

Immunogen

Amino acids 228-449 of human Clusterin/Apolipoprotein J were used as the immunogen for the CLU antibody.

Storage

After reconstitution, the CLU antibody can be stored for up to one month at 4oC. For long-term, aliquot and store at -20oC. Avoid repeated freezing and thawing.