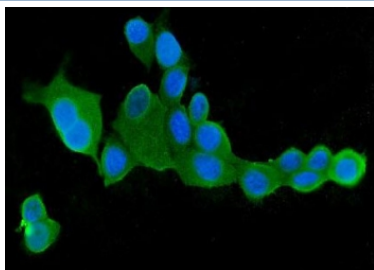


CLPX Antibody / Caseinolytic protease X [clone 11C11] (RQ5618)

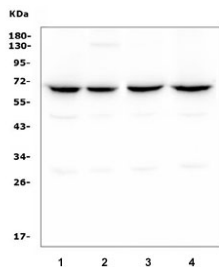
Catalog No.	Formulation	Size
RQ5618	0.5mg/ml if reconstituted with 0.2ml sterile DI water	100 ug

Bulk quote request

Availability	1-3 business days
Species Reactivity	Human
Format	Antigen affinity purified
Host	Mouse
Clonality	Monoclonal (mouse origin)
Isotype	Mouse IgG2b
Clone Name	11C11
Purity	Affinity purified
Buffer	Lyophilized from 1X PBS with 2% Trehalose and 0.025% sodium azide
UniProt	O76031
Localization	Cytoplasmic, nuclear
Applications	Western Blot : 0.5-1ug/ml Immunofluorescence : 2-4ug/ml
Limitations	This CLPX antibody is available for research use only.



IF/ICC staining of FFPE human MCF7 cells with CLPX antibody (green) at 2ug/ml and DAPI nuclear stain (blue). HIER: steam section in pH6 citrate buffer for 20 min.



Western blot testing of human 1) Raji, 2) HeLa, 3) HepG2 and 4) Caco-2 lysate with CLPX antibody. Predicted molecular weight ~69 kDa.

Description

ATP-dependent Clp protease ATP-binding subunit clpX-like, mitochondrial is an enzyme that in humans is encoded by the CLPX gene. This protein is a member of the family of AAA Proteins (AAA+ ATPase) and is to form the protein complex of Clp protease. The protein encoded by this gene is part of a protease found in mitochondria. This protease is ATP-dependent and targets specific proteins for degradation. The protease consists of two heptameric rings of the CLPP catalytic subunit sandwiched between two hexameric rings of the chaperone subunit encoded by this gene. Targeted proteins are unwound by this protein and then passed on to the CLPP subunit for degradation. Two transcript variants, one protein-coding and the other non-protein coding, have been found for this gene.

Application Notes

Optimal dilution of the CLPX antibody should be determined by the researcher.

Immunogen

A human recombinant protein (amino acids A337-E574) was used as the immunogen for the CLPX antibody.

Storage

After reconstitution, the CLPX antibody can be stored for up to one month at 4°C. For long-term, aliquot and store at -20°C. Avoid repeated freezing and thawing.