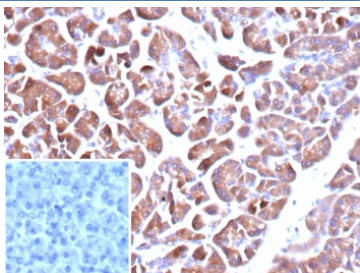


## CLPS Antibody / Colipase [clone CLPS/9898] (V5670)

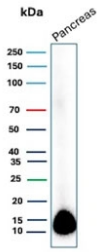
Catalog No.	Formulation	Size
V5670-100UG	0.2 mg/ml in 1X PBS with 0.1 mg/ml BSA (US sourced), 0.05% sodium azide	100 ug
V5670-20UG	0.2 mg/ml in 1X PBS with 0.1 mg/ml BSA (US sourced), 0.05% sodium azide	20 ug
V5670SAF-100UG	1 mg/ml in 1X PBS; BSA free, sodium azide free	100 ug

[Bulk quote request](#)

<b>Availability</b>	1-3 business days
<b>Species Reactivity</b>	Human
<b>Format</b>	Purified
<b>Host</b>	Mouse
<b>Clonality</b>	Monoclonal (mouse origin)
<b>Isotype</b>	Mouse IgG1, kappa
<b>Clone Name</b>	CLPS/9898
<b>Purity</b>	Protein G affinity
<b>UniProt</b>	P04118
<b>Localization</b>	Secreted
<b>Applications</b>	Immunohistochemistry (FFPE) : 1-2ug/ml Western Blot : 2-4ug/ml
<b>Limitations</b>	This CLPS antibody is available for research use only.



IHC staining of FFPE human pancreas tissue with CLPS antibody (clone CLPS/9898). Inset: PBS used in place of primary Ab (secondary Ab negative control). HIER: boil tissue sections in pH 9 10mM Tris with 1mM EDTA for 20 min and allow to cool before testing.



Western blot testing of human pancreas tissue lysate with CLPS antibody (clone CLPS/9898). Predicted molecular weight ~12 kDa.

## Description

The lipase gene family belongs to one of the most robust genetic superfamilies found in living organisms, which includes esterases and thioesterases. Members of the AB hydrolase subfamily include Hepatic Lipase (HL), Endothelial Lipase (EL), Lipoprotein Lipase (LPL), Pancreatic Lipase (PL), Gastric Lipase (GL) and LCAT. These family members play a crucial role in the metabolism of lipids. Pancreatic lipase, also designated pancreatic triacylglycerol acyl hydrolase, is important for dietary fat absorption as it hydrolyses triglycerides into diglycerides, monoglycerides and free fatty acids. Colipase, also known as CLPS or pancreatic colipase preproprotein, is a 112 amino acid secreted protein that functions as a cofactor of pancreatic lipase. Necessary for dietary lipid hydrolysis and localizing to pancreatic acinar cells, colipase allows pancreatic lipase to anchor itself to the lipid-water interface of lipid micelles, thereby preventing intestinal bile salts from washing it off.

## Application Notes

Optimal dilution of the CLPS antibody should be determined by the researcher.

## Immunogen

A portion of amino acids 1-112 from human CLPS protein was used as the immunogen for the CLPS antibody.

## Storage

Aliquot the CLPS antibody and store frozen at -20°C or colder. Avoid repeated freeze-thaw cycles.