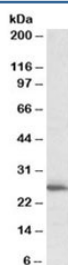


CLPP Antibody (R33692)

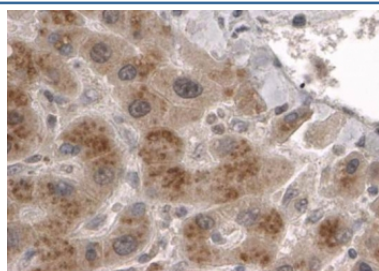
Catalog No.	Formulation	Size
R33692-100UG	0.5 mg/ml in 1X TBS, pH7.3, with 0.5% BSA (US sourced) and 0.02% sodium azide	100 ug

[Bulk quote request](#)

Availability	1-3 business days
Species Reactivity	Human
Format	Antigen affinity purified
Host	Goat
Clonality	Polyclonal (goat origin)
Isotype	Goat Ig
Purity	Antigen affinity
Gene ID	8192
Applications	Western Blot : 1-3ug/ml Immunohistochemistry (FFPE) : 2-4ug/ml ELISA (peptide) LOD : 1:1000
Limitations	This CLPP antibody is available for research use only.



Western blot testing of human heart lysate with CLPP antibody at 1ug/ml. Predicted molecular weight: ~30 kDa.



IHC staining of FFPE human liver with CLPP antibody at 2ug/ml. HIER: steamed with pH6 citrate buffer, HRP-staining.

Description

Additional name(s) for this target protein: Caseinolytic protease, ATP-dependent, proteolytic subunit

Application Notes

Optimal dilution of the CLPP antibody should be determined by the researcher.

Immunogen

Amino acids EAAPAAEPVPAST were used as the immunogen for this CLPP antibody.

Storage

Aliquot and store the CLPP antibody at -20oC.