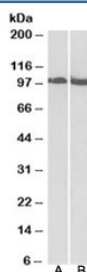


## CLOCK Antibody (R33663)

Catalog No.	Formulation	Size
R33663-100UG	0.5 mg/ml in 1X TBS, pH7.3, with 0.5% BSA (US sourced) and 0.02% sodium azide	100 ug

[Bulk quote request](#)

Availability	1-3 business days
Species Reactivity	Human, Mouse, Rat
Format	Antigen affinity purified
Host	Goat
Clonality	Polyclonal (goat origin)
Isotype	Goat Ig
Purity	Antigen affinity
Gene ID	9575
Localization	Nuclear, cytoplasmic
Applications	Western Blot : 0.03-0.1ug/ml ELISA (peptide) LOD : 1:128000
Limitations	This CLOCK antibody is available for research use only.



Western blot testing of mouse [A] and rat [B] skeletal muscle lysate with CLOCK antibody at 0.03ug/ml. Predicted molecular weight ~95 kDa but routinely observed at 95-110 kDa.

## Description

Additional name(s) for this target protein: Circadian locomoter output cycles protein kaput; KAT13D

## Application Notes

Optimal dilution of the CLOCK antibody should be determined by the researcher.

## Immunogen

Amino acids DTSTPPRQHLPAGEK were used as the immunogen for this CLOCK antibody.

## Storage

Aliquot and store the CLOCK antibody at -20oC.

## References (2)