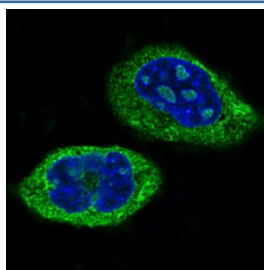


CLOCK Antibody [clone ACCH-3] (RQ4730)

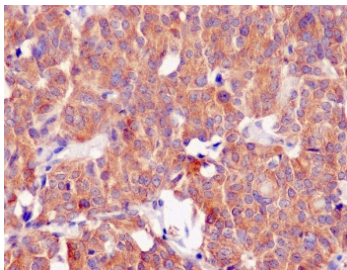
Catalog No.	Formulation	Size
RQ4730	Antibody in PBS with 0.02% sodium azide, 50% glycerol and 0.4-0.5mg/ml BSA	100 ul

[Bulk quote request](#)

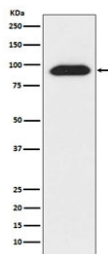
Availability	1-2 weeks
Species Reactivity	Human
Format	Purified
Clonality	Rabbit Monoclonal
Isotype	Rabbit IgG
Clone Name	ACCH-3
Purity	Affinity purified
UniProt	O15516
Localization	Cytoplasmic
Applications	Western Blot : 1:1000-1:5000 Immunohistochemistry (FFPE) : 1:50-1:200 Immunofluorescence/Immunocytochemistry : 1:50-1:200
Limitations	This CLOCK antibody is available for research use only.



IF/ICC staining of human HeLa cells with CLOCK antibody (green) and DAPI nuclear stain (blue).



IHC staining of human thyroid carcinoma with CLOCK antibody. HIER: boil tissue sections in pH6, 10mM citrate buffer, for 10-20 min and allow to cool before testing.



Western blot testing of human 293T cell lysate with CLOCK antibody. Predicted molecular weight ~95 kDa but routinely observed at 95-110 kDa.

Description

Circadian rhythms govern many key physiological processes that fluctuate with a period of approximately 24 hours. These processes include the sleep-wake cycle, glucose, lipid and drug metabolism, heart rate, hormone secretion, renal blood flow, and body temperature, as well as basic cellular processes such as DNA repair and the timing of the cell division cycle.

Application Notes

Optimal dilution of the CLOCK antibody should be determined by the researcher.

Immunogen

A synthetic peptide specific to human CLOCK was used as the immunogen for the CLOCK antibody.

Storage

Store the CLOCK antibody at -20oC.