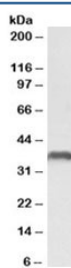


CLL-1 Antibody (R34885)

Catalog No.	Formulation	Size
R34885-100UG	0.5 mg/ml in 1X TBS, pH7.3, with 0.5% BSA (US sourced) and 0.02% sodium azide	100 ug

[Bulk quote request](#)

Availability	1-3 business days
Species Reactivity	Human
Format	Antigen affinity purified
Host	Goat
Clonality	Polyclonal (goat origin)
Isotype	Goat Ig
Purity	Antigen affinity
Gene ID	160364
Applications	Western Blot : 0.3-1ug/ml ELISA (peptide) LOD : 1:128000
Limitations	This CLL-1 antibody is available for research use only.



Western blot testing of U937 lysate with CLL-1 antibody at 0.3ug/ml. Predicted molecular weight: ~31/37kDa (unmodified/glycosylated).

Description

Additional name(s) for this target protein: CLEC12A, C-type lectin domain family 12 member A, CLL1, DCAL-2, MICL

Application Notes

Optimal dilution of the CLL-1 antibody should be determined by the researcher.

Immunogen

Amino acids NPVQLGSTYFRE were used as the immunogen for this CLL-1 antibody.

Storage

Aliquot and store the CLL-1 antibody at -20oC.