

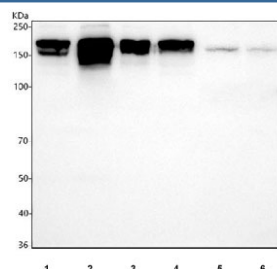
## CLIP1 Antibody / CLIP170 / CAP-GLY domain containing linker protein 1 [clone 29C06] (RQ8723)

Catalog No.	Formulation	Size
RQ8723	Antibody in PBS with 0.02% sodium azide, 50% glycerol and 0.4-0.5mg/ml BSA	100 ul

Recombinant **RABBIT MONOCLONAL**

[Bulk quote request](#)

Availability	1-3 days
Species Reactivity	Human, Mouse, Rat
Format	Purified
Clonality	Recombinant Rabbit Monoclonal
Isotype	Rabbit IgG
Clone Name	29C06
Purity	Affinity chromatography
UniProt	P30622
Applications	Western Blot : 1:500-1:2000
Limitations	This CLIP1 antibody is available for research use only.



Western blot testing of 1) human HeLa, 2) human SiHa, 3) human A549, 4) human MCF7, 5) rat brain and 6) mouse brain with CLIP1 antibody. Predicted molecular weight: 156-162 kDa (multiple isoforms), commonly observed at ~170 kDa.

## Description

CLIP1 binds to the plus end of microtubules and regulates the dynamics of the microtubule cytoskeleton. Promotes microtubule growth and microtubule bundling. Links cytoplasmic vesicles to microtubules and thereby plays an important role in intracellular vesicle trafficking. Plays a role macropinocytosis and endosome trafficking. [UniProt]

## Application Notes

Optimal dilution of the CLIP1 antibody should be determined by the researcher.

## Immunogen

A synthetic peptide specific to human CAP-GLY domain containing linker protein 1 was used as the immunogen for the CLIP1 antibody.

## Storage

Store the CLIP1 antibody at -20oC.