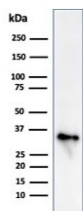


CLIP Antibody / CD74 [clone CLIP/813] (V3180)

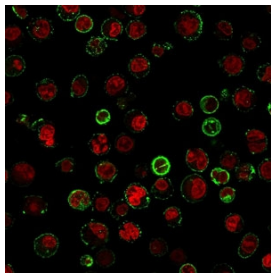
Catalog No.	Formulation	Size
V3180-100UG	0.2 mg/ml in 1X PBS with 0.1 mg/ml BSA (US sourced) and 0.05% sodium azide	100 ug
V3180-20UG	0.2 mg/ml in 1X PBS with 0.1 mg/ml BSA (US sourced) and 0.05% sodium azide	20 ug
V3180SAF-100UG	1 mg/ml in 1X PBS; BSA free, sodium azide free	100 ug
V3180IHC-7ML	Prediluted in 1X PBS with 0.1 mg/ml BSA (US sourced) and 0.05% sodium azide; *For IHC use only*	7 ml

[Bulk quote request](#)

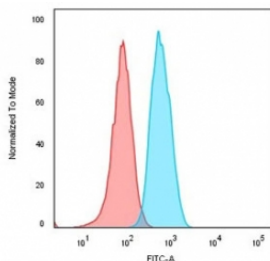
Availability	1-3 business days
Species Reactivity	Human
Format	Purified
Clonality	Monoclonal (mouse origin)
Isotype	Mouse IgG1, kappa
Clone Name	CLIP/813
Purity	Protein G affinity chromatography
UniProt	P04233
Localization	Cell surface and paranuclear globular
Applications	Flow Cytometry : 1-2ug/10 ⁶ cells (methanol-fixed) Immunofluorescence : 1-2ug/ml Immunohistochemistry (FFPE) : 1-2ug/ml for 30 min at RT Western Blot : 1-2ug/ml
Limitations	This CLIP antibody is available for research use only.



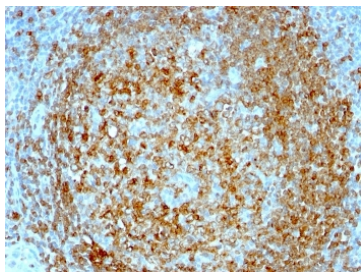
Western blot testing of human Raji cell lysate with CLIP antibody (clone CLIP/813).
Expected molecular weight: 33-43 kDa.



Immunofluorescent staining of human Raji cells with CLIP antibody (green, clone CLIP/813) and Reddot nuclear stain (red).



Flow cytometry testing of human Raji cells with CLIP antibody (clone CLIP/813); Red=isotype control, Blue= CLIP antibody.



IHC analysis of formalin/paraffin human tonsil with CLIP antibody (clone CLIP/813).

Description

Recognizes proteins of 33, 35 and 41kDa, which are identified as various isoforms of CD74/CLIP. Its epitope is localized in the extracellular domain of CD74. CD74/CLIP is a type II transmembrane protein which binds to the peptide binding groove of newly synthesized MHC class II alpha/beta heterodimers and prevents their premature association with endogenous polypeptides. The molecule plays a critical role in the presentation of peptides, by the MHC class II antigens, to CD4 positive lymphocytes. CD74/CLIP is expressed on MHC class II positive cells including B cells, a subset of activated T cells, monocytes, and dendritic cells and by various types of carcinomas. It is expressed primarily by antigen presenting cells, such as B-lymphocytes (from before the pre-B cell stage to before the plasma cell stage), macrophages, and monocytes, and many epithelial cells. Anti-CD74/CLIP stains predominantly germinal center lymphocytes and B-cell lymphomas, but rarely T-cell lymphomas and has been shown to be useful in differentiating atypical fibroxanthoma (-) from malignant fibrous histiocytoma (+).

Application Notes

Optimal dilution of the CLIP antibody should be determined by the researcher.

1. Staining of formalin-fixed tissues requires boiling tissue sections in 10mM Citrate buffer, pH 6.0, for 10-20 min followed by cooling at RT for 20 min.
2. The prediluted format is supplied in a dropper bottle and is optimized for use in IHC. After epitope retrieval step (if required), drip mAb solution onto the tissue section and incubate at RT for 30 min.

Immunogen

Recombinant full-length human protein was used as the immunogen for the CLIP antibody. Its epitope is localized in the

extracellular domain of CLIP/CD74.

Storage

Store the CLIP antibody at 2-8oC (with azide) or aliquot and store at -20oC or colder (without azide).